

Master Planning

Architecture

Landscape Design

Interior Spaces

Art Illustrations



The
NGK
Studio

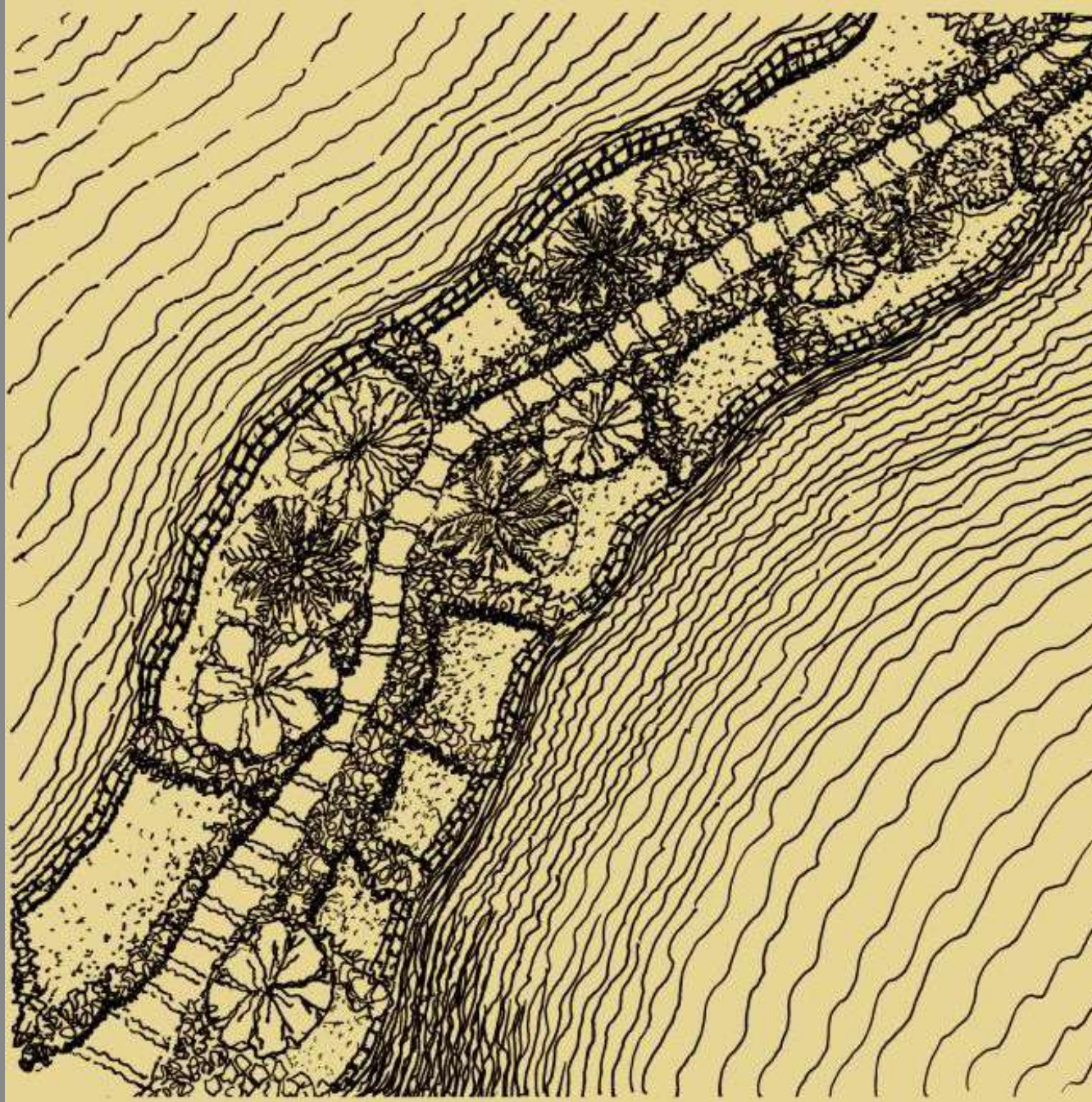
natures | green | kinaesthetic

“Our Inspiration is
Music, to create spaces.”



Coming & Going

Coming and going
is not important it
is what you leave
behind....



The Pathway of Life

The Pathway of Life was discovered on 27th September, 2015 while listening to a live Flute recital. The soft tunes of the flute and the rhythmic beats of the Tabla led me to this beautiful '**Pathway of Life**' which inspires me to lead a life that is beautiful and that would strive for the creation of true beauty that is in synergy with nature. This way I could respect nature which is the ultimate truth.

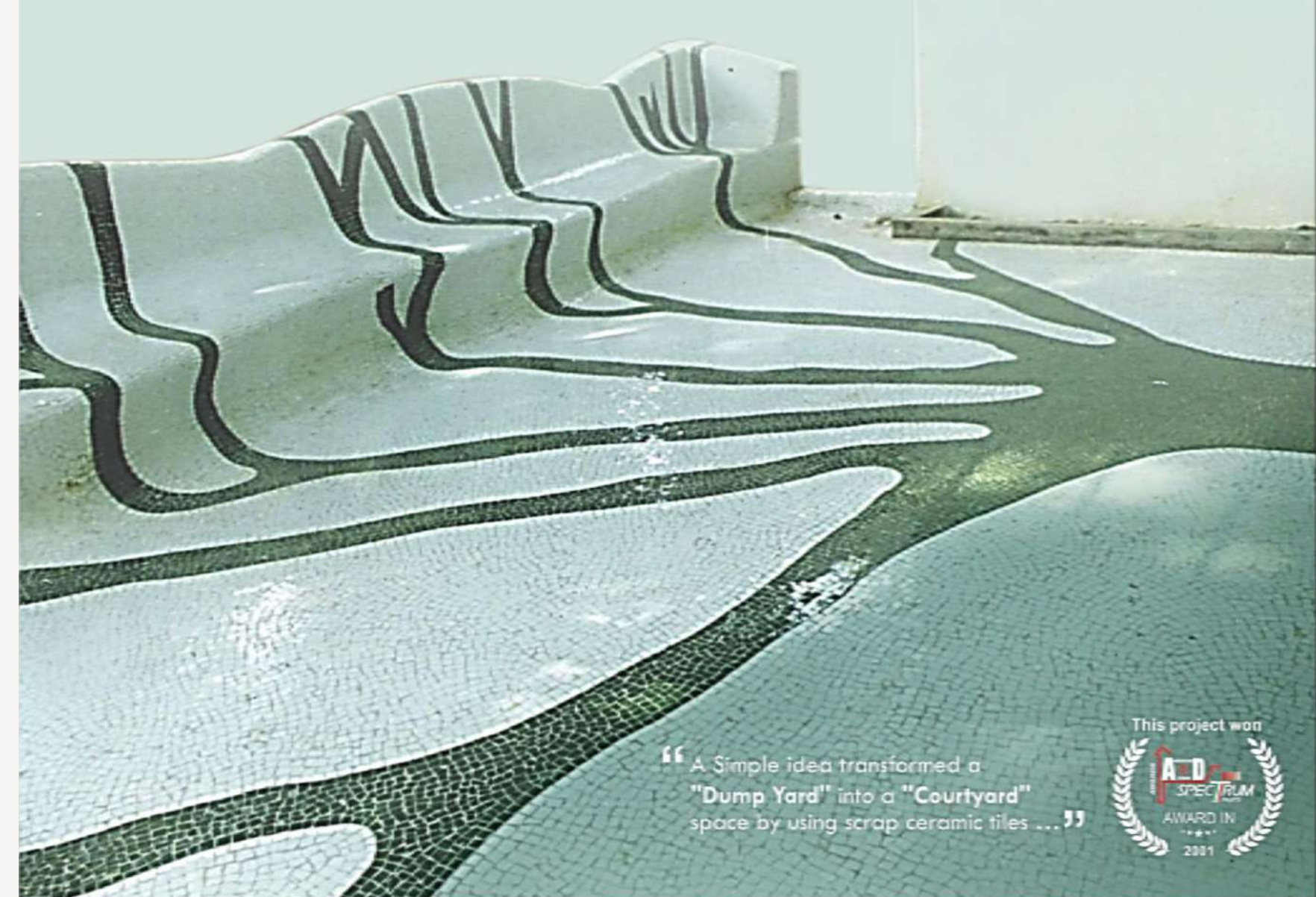
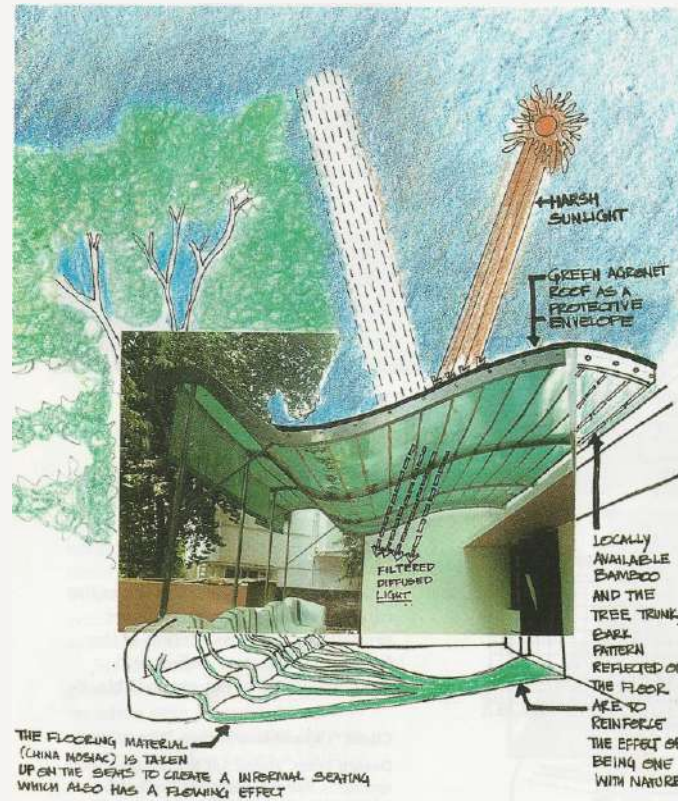
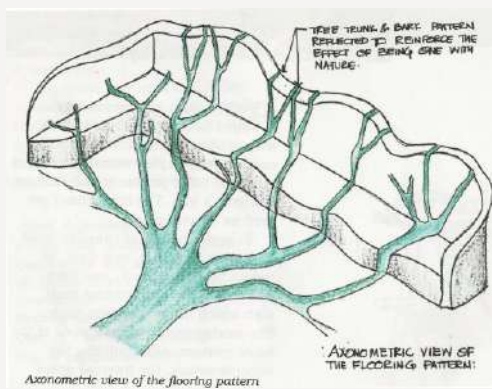
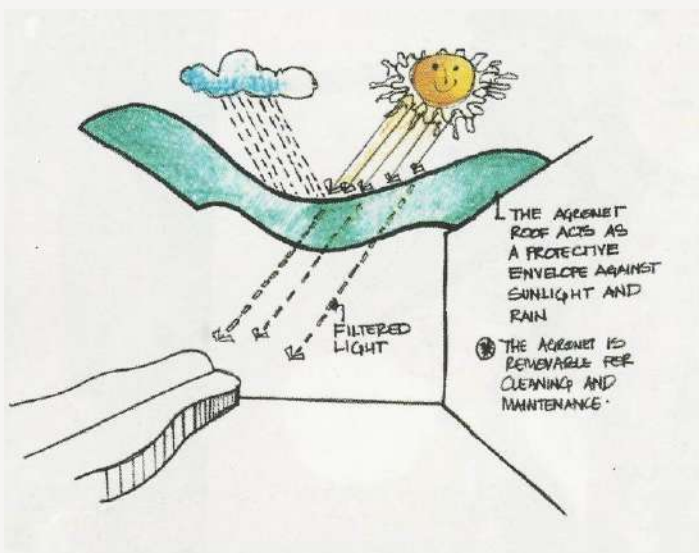
The
NGK
Studio
natures | green | kinaesthetic

The “COURTYARD” - A LUNG

Location : Ahmedabad

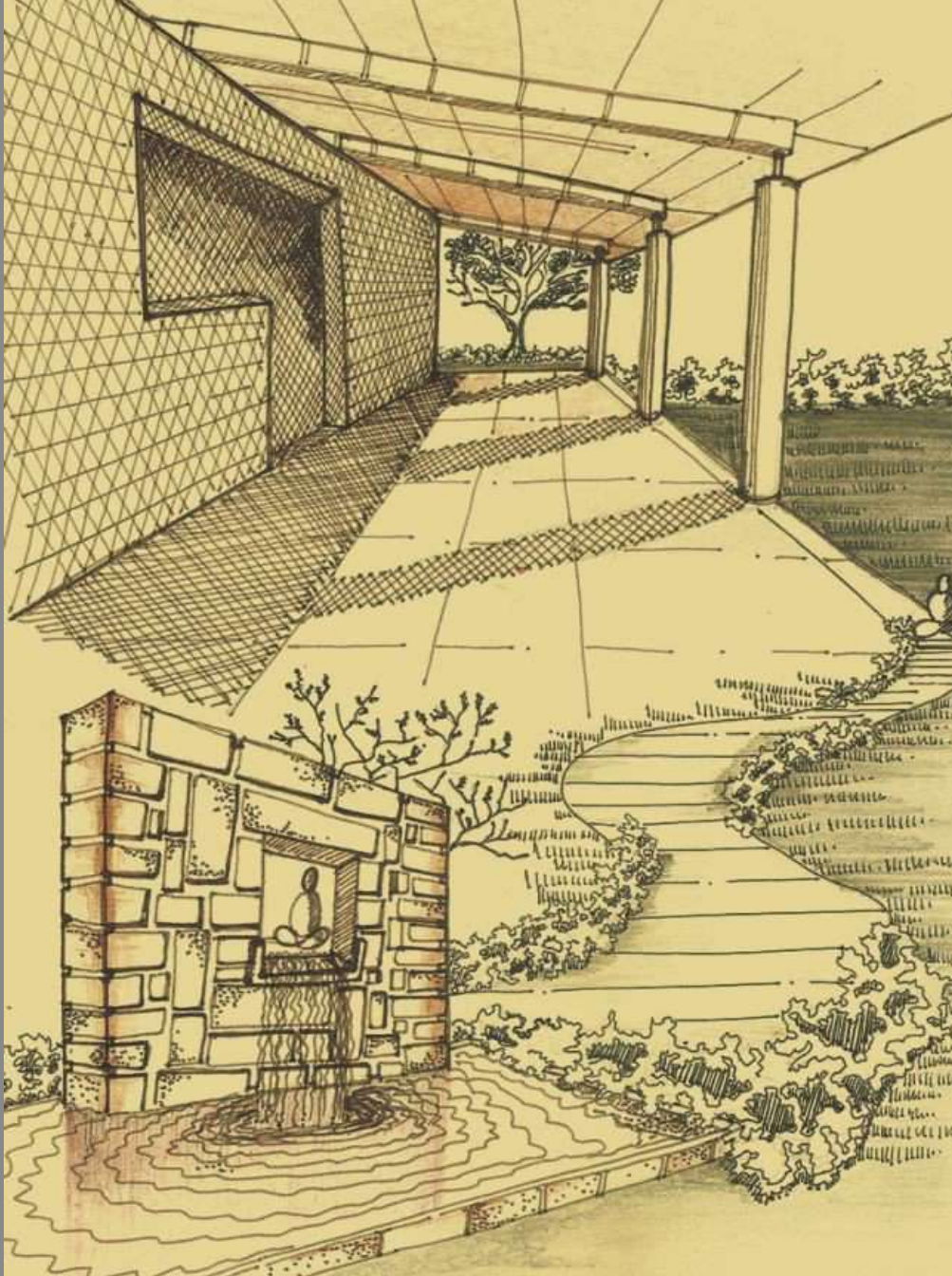
BUA : 344 sqft

Year of Completion : 2000



We Focus on the 'Why' a space is created as opposed to What to do ? This helped transform a dump yard into a Tranquil Court Yard.

Synchronization



Fusion of **built and open space**

These glimpses of “Geoffrey Bawa’s” work demonstrate a synergistic relationship between built form and nature, such that they are seen as an integrated composition in space...

The
NGK
Studio
natures | green | kinaesthetic

THE H.R. CENTRE OF EXCELLENCE

Location : Pune

Built-up Area : 25,000 sqft

Landscape Area : 2,000 sqft

Year of Completion : 2016



H.R CENTRE OF EXCELLENCE FOR AN AUTOMOBILE COMPANY.

Rhythm



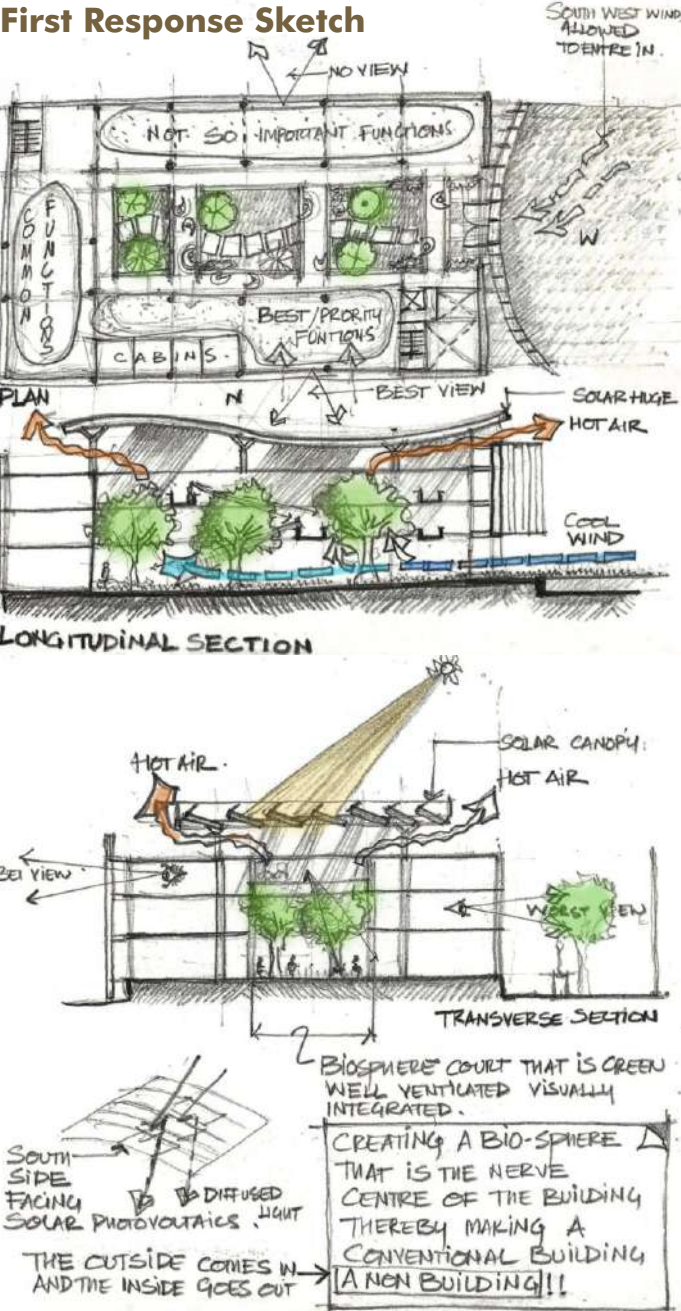
After

Transforming the
Old to New gives us a lot of
Creative Satisfaction.



Before

First Response Sketch

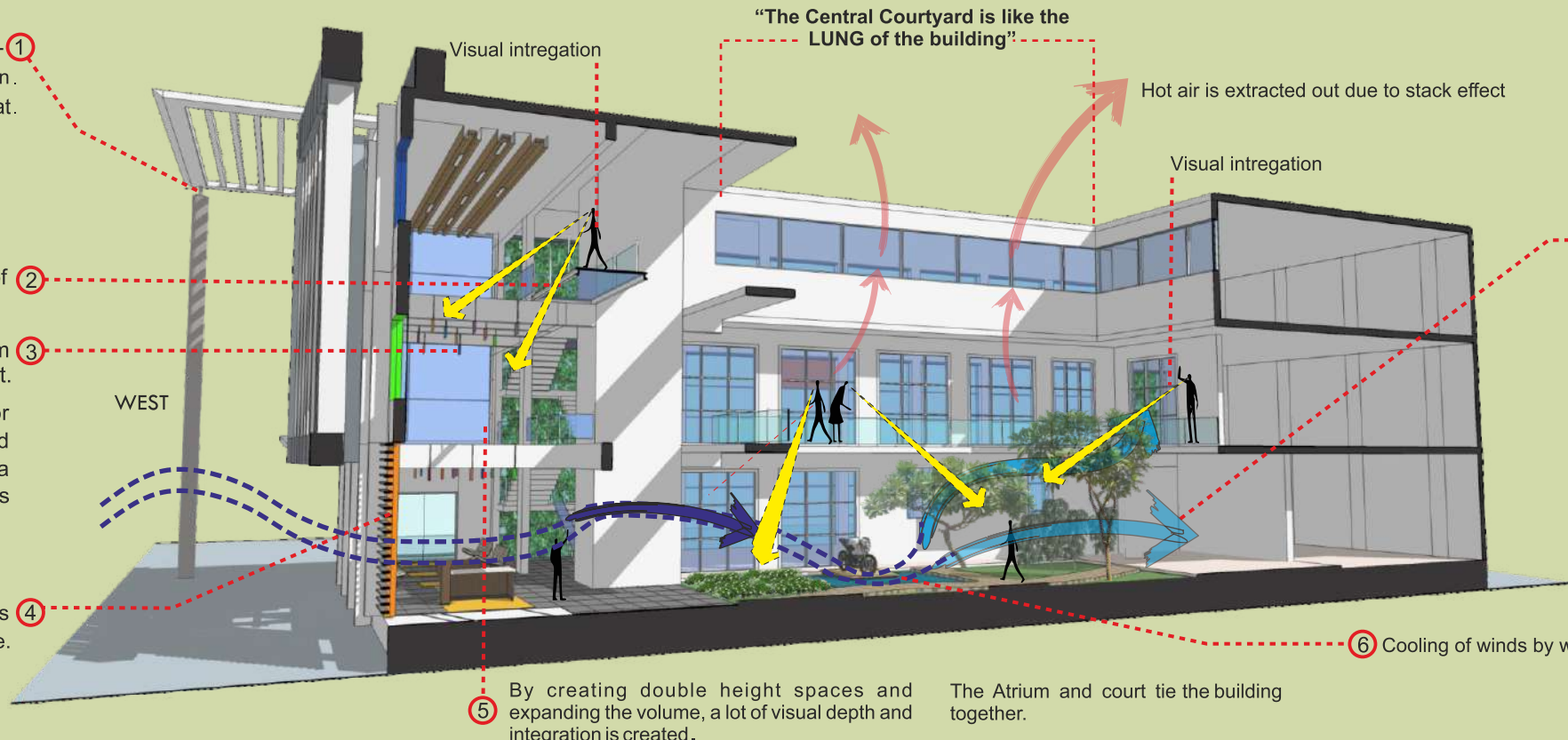


Canopy-1
Pin Joints to release visual tension.
Pergola to shade glass box from western heat.

A glass bridge on the second floor of atrium to create visual lightness.

Use of flags in the atrium to evoke the "G-local" spirit.
The building had to undergo major structural modifications which included breaking of existing slabs to create a triple height atrium which is important for the entry experience.

Louvered opening at the western side brings in westerly breeze.



Hot air is extracted out due to stack effect

Cool Air to the transition spaces.
All transition spaces are naturally ventilated saving Air Conditioning for **40%** of total area.
Every attempt is made to get in the positive effects of natural light and framing the views internally and externally.
All of the terrace Rain water run off is harvested in recharge pit.

Sectional Perspective



Calm & soothing

*Every space has a heart and
our creative **focus is to make it beat.***

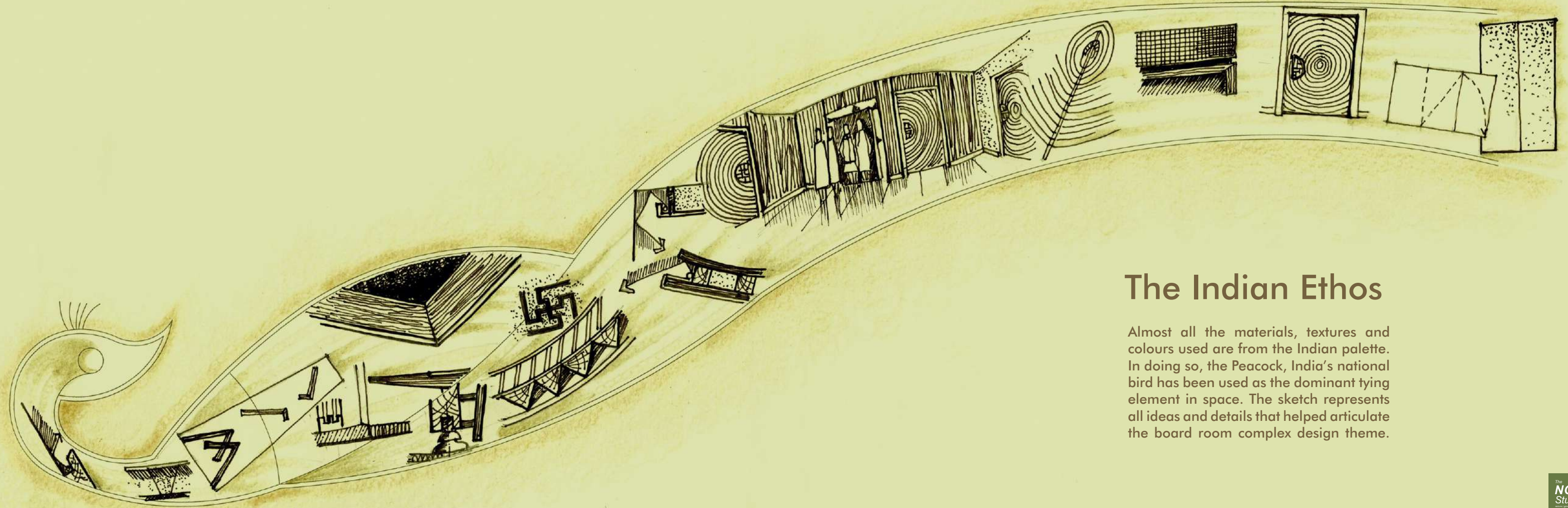


After

Before



Changing Mood



The Indian Ethos

Almost all the materials, textures and colours used are from the Indian palette. In doing so, the Peacock, India's national bird has been used as the dominant tying element in space. The sketch represents all ideas and details that helped articulate the board room complex design theme.

The
NGK
Studio
natures | green | kinaesthetic

BOARDROOM COMPLEX

Location : Pune

Built-up Area : 4,000 sqft

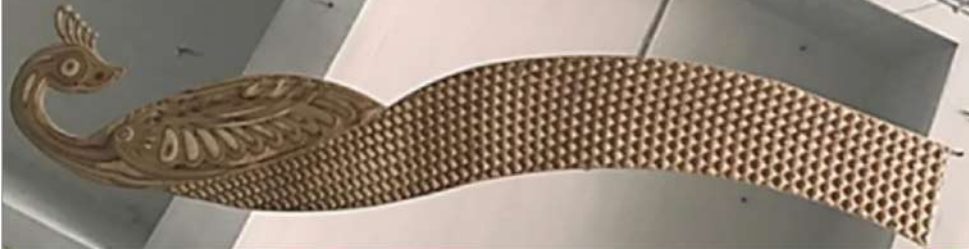
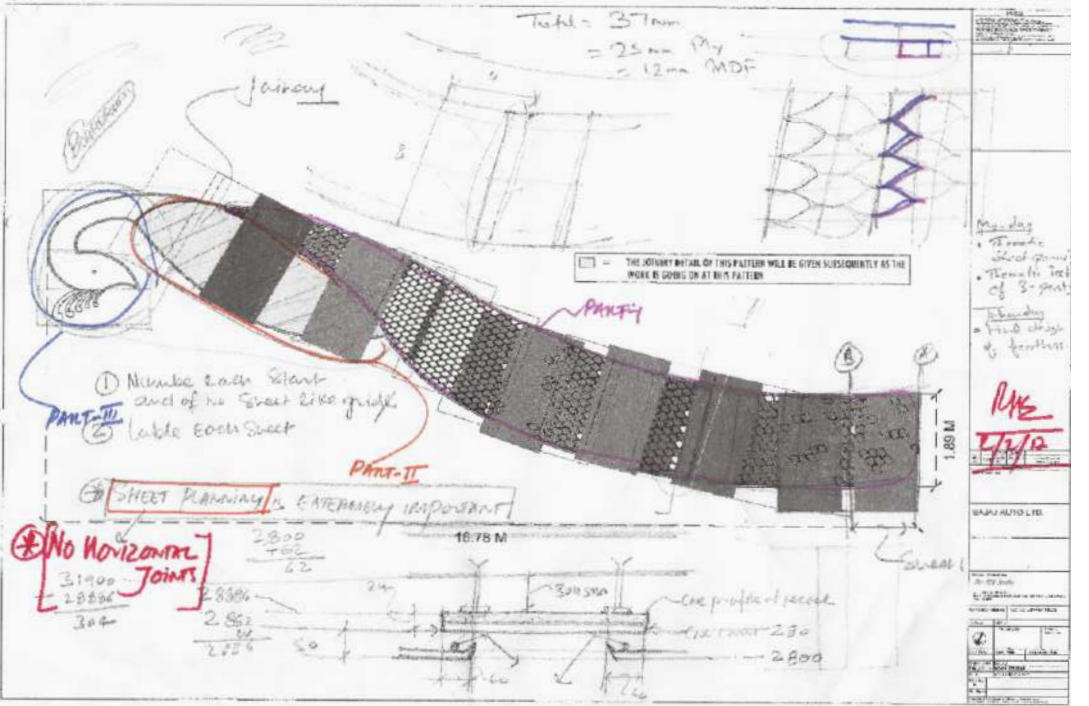
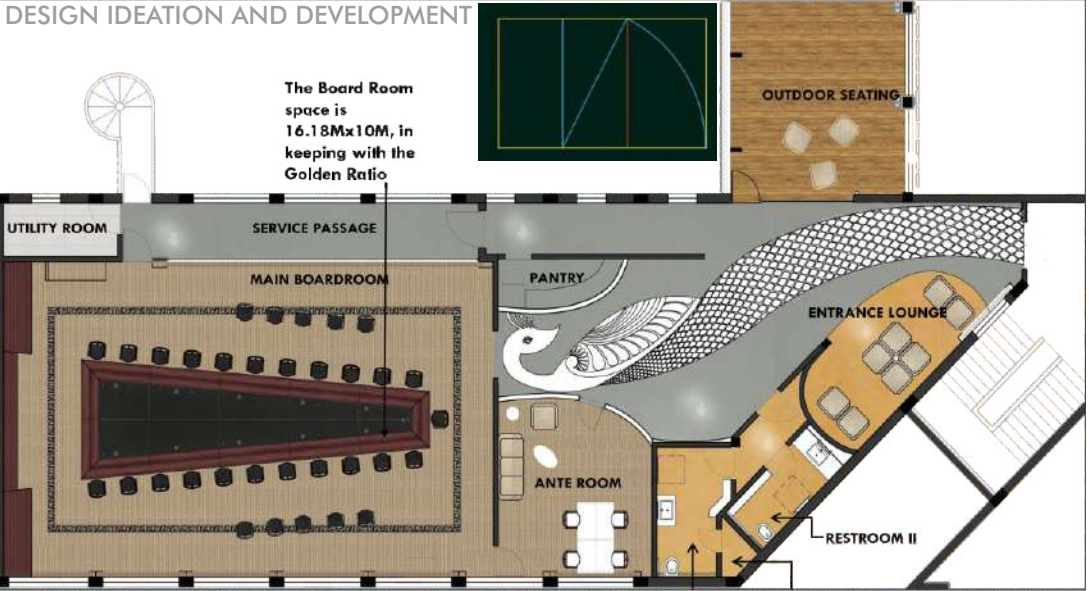
Year of Completion : 2017



CORPORATE BOARD ROOM INTERIOR DESIGN FOR A PROMINENT CORPORATION.

Flow and Variation

DESIGN IDEATION AND DEVELOPMENT



Deployment of
Cutting Edge
Material research
in our work.



God lies
in the
details





Delight



Warmth



Before



Interim



Getting the **Outside in** is an ongoing **Quest**.



Walking in the Wood

Walking in the Woods is reminiscent of the shades of life, which has its highs and lows and the horizon at the end can be seen as a point of satisfaction, to reach our purpose of life.



EDUCATIONAL BUSINESS BAY – MONTESSORI SCHOOL

Location : Pune

Land area : 1.04 Acre

BUA : 45,700 Sq. ft

Year of Completion : 2017



MIXED USE DEVELOPMENT IN AN URBAN CONTEXT.

All the grit panel lines with ACP have been carefully matched to give a crafted feel to the facade.

Detail

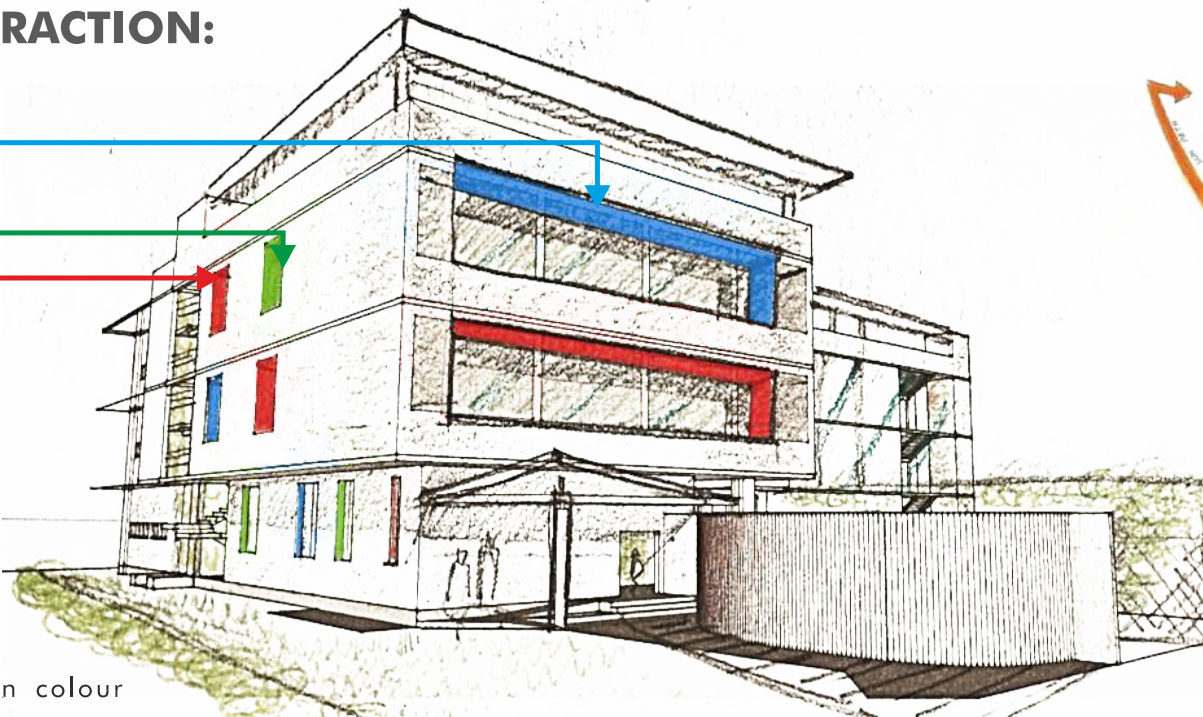
Layering

Synergy

COLOUR ABSTRACTION:



Global Indian International School

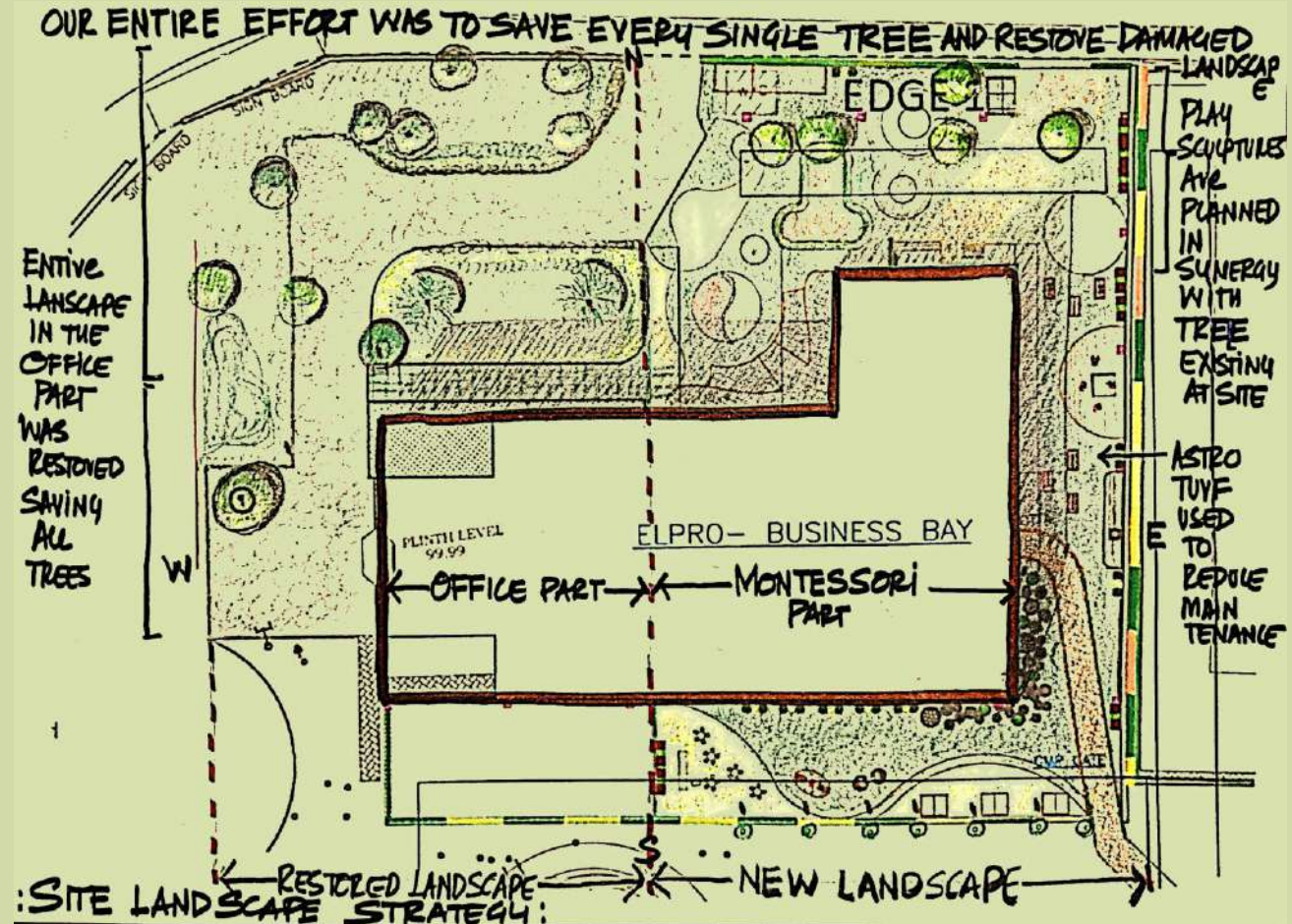
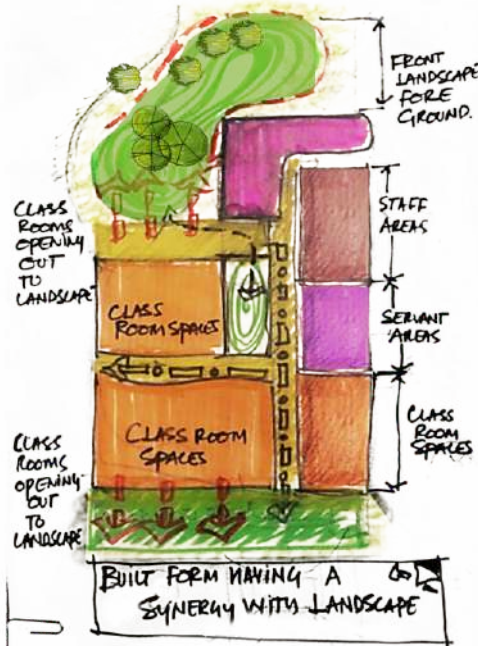
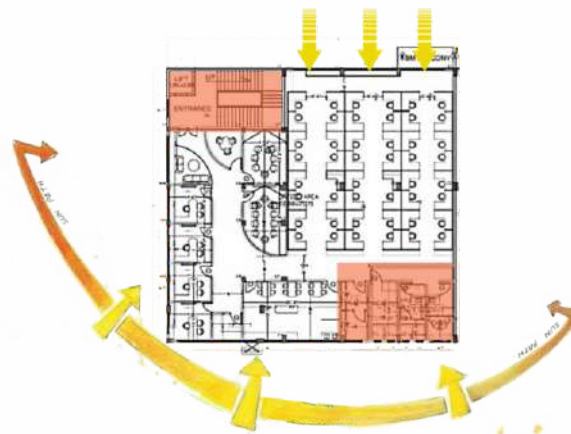


North- East facade



The Facade was given colour abstraction from the corporate colours of the end users – GIIS in this case as it was the principal tenant, to add visual delight to the facade . Aluminium powder coated louvers were selected to add visual cheer to the facade especially to camouflage service shafts.

Columns coming in way of Windows were made to look interesting with coloured ACP cladding from corporate colours used in the facade.





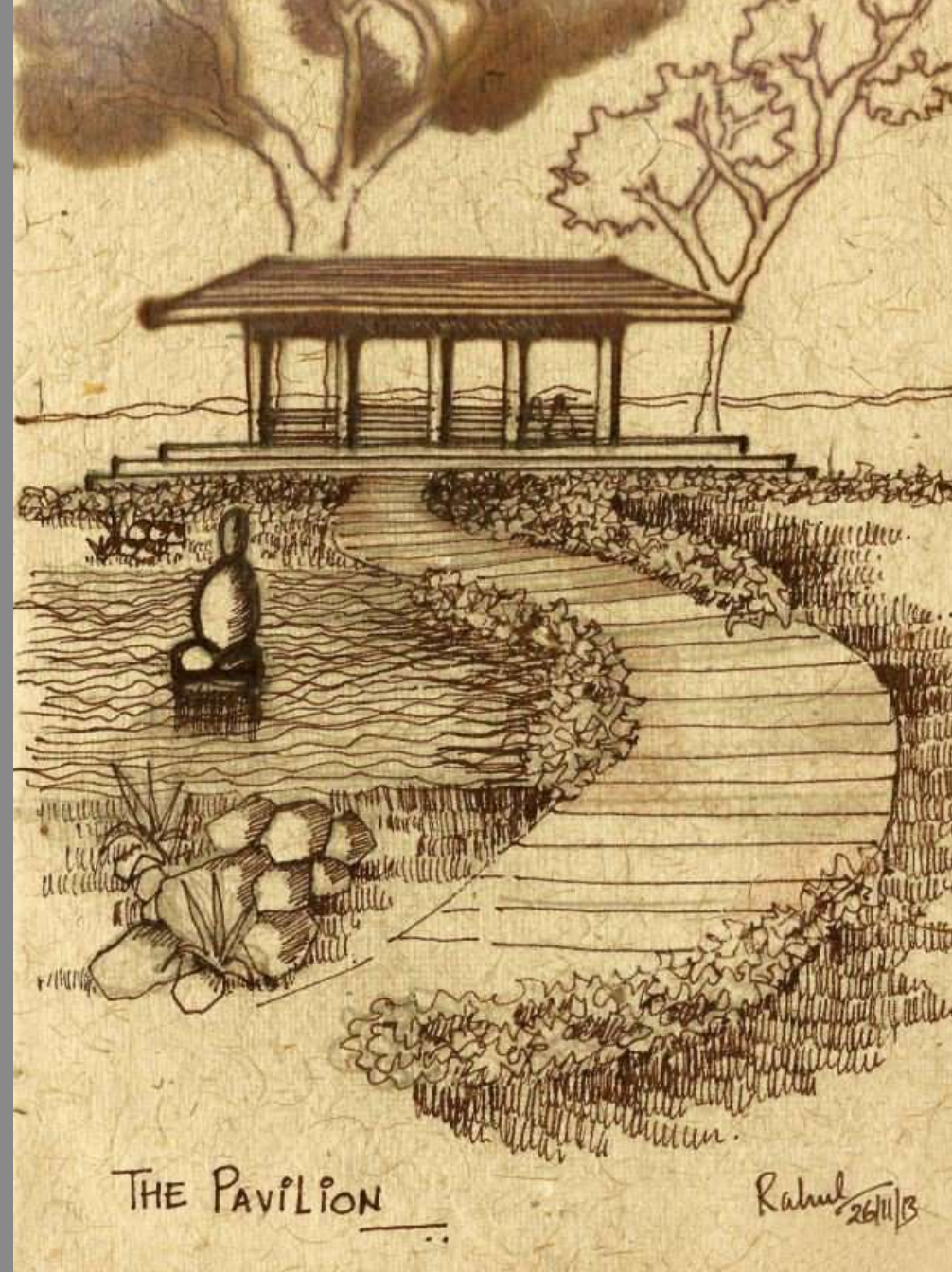
Before



After



Recycling buildings from **OLD** to **NEW** needs a lot of careful attention to detail.



The Pavilion
of inner peace and
tranquility
in the lap of
nature.



FACILITY FOR TRANSFORMATION MANAGEMENT

Location : Pune

Land area : 6.5 Acres

BUA : 44,000 sqft

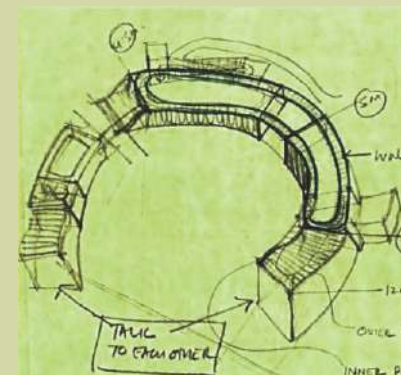
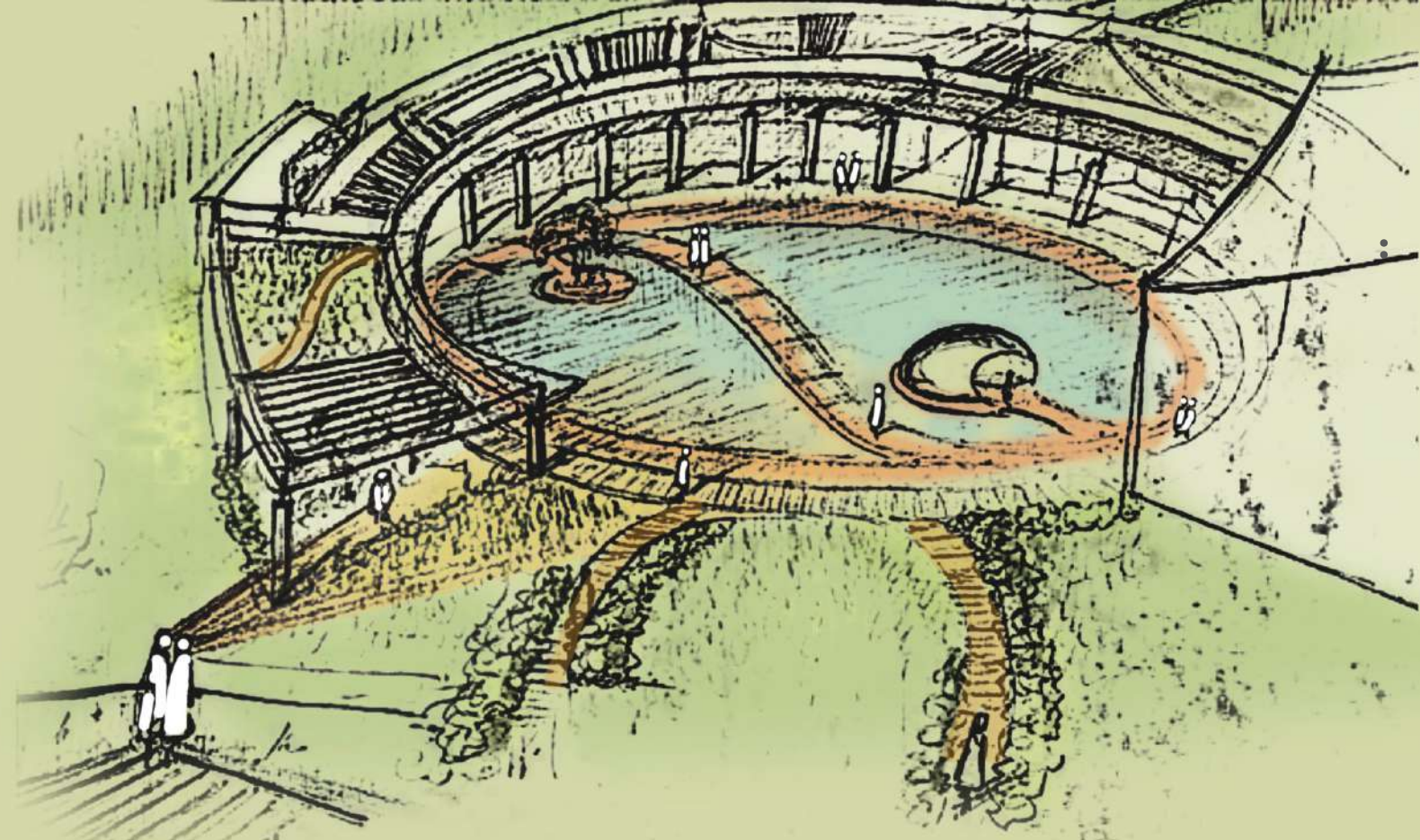
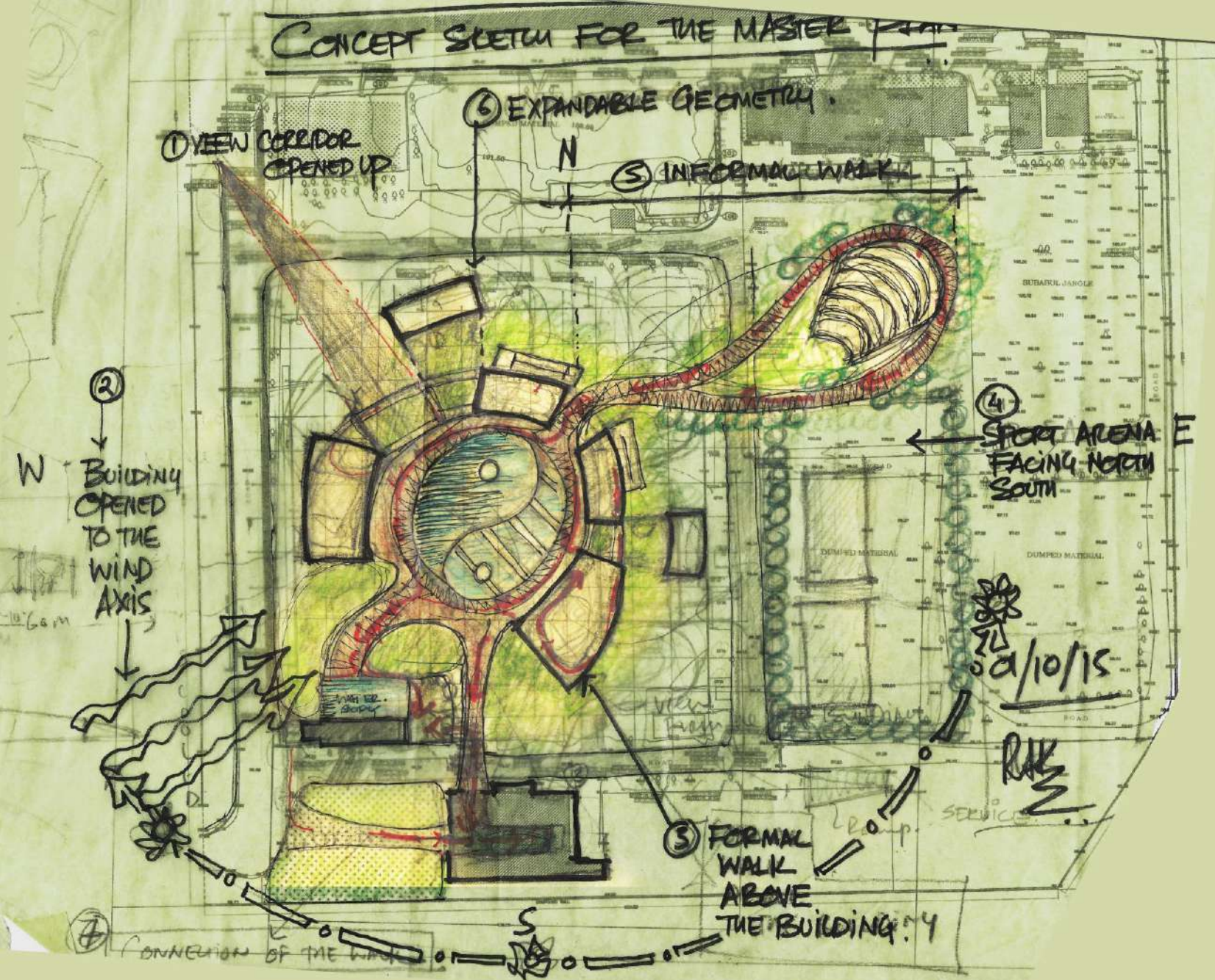
Expected Completion : March-April 2020.



FACILITY FOR TRANSFORMATION MANAGEMENT.

Proportion

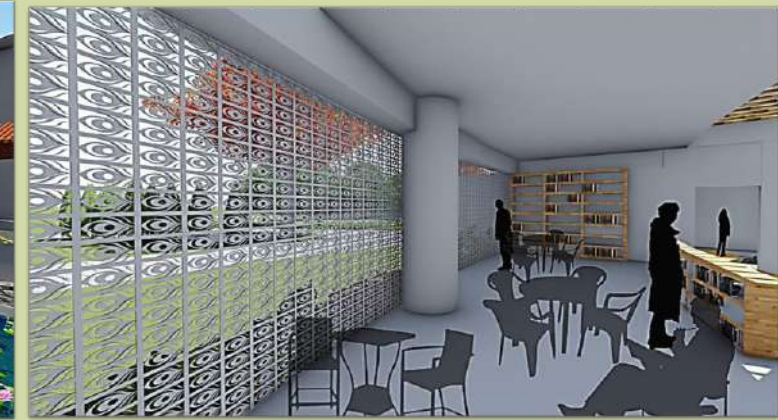
CONCEPT SKETCH FOR THE MASTER



For us, the Master Plan is like
creating a Painting in reality.



We take pleasure in giving life to this painting



2017
20 best unbuilt projects





MACRO and MICRO elements have compliment each other.



Coming & Going

Coming and going
is not important it
is what you leave
behind....can be a
profound way to
live life and to co-create

The
NGK
Studio
natures | green | kinaesthetic

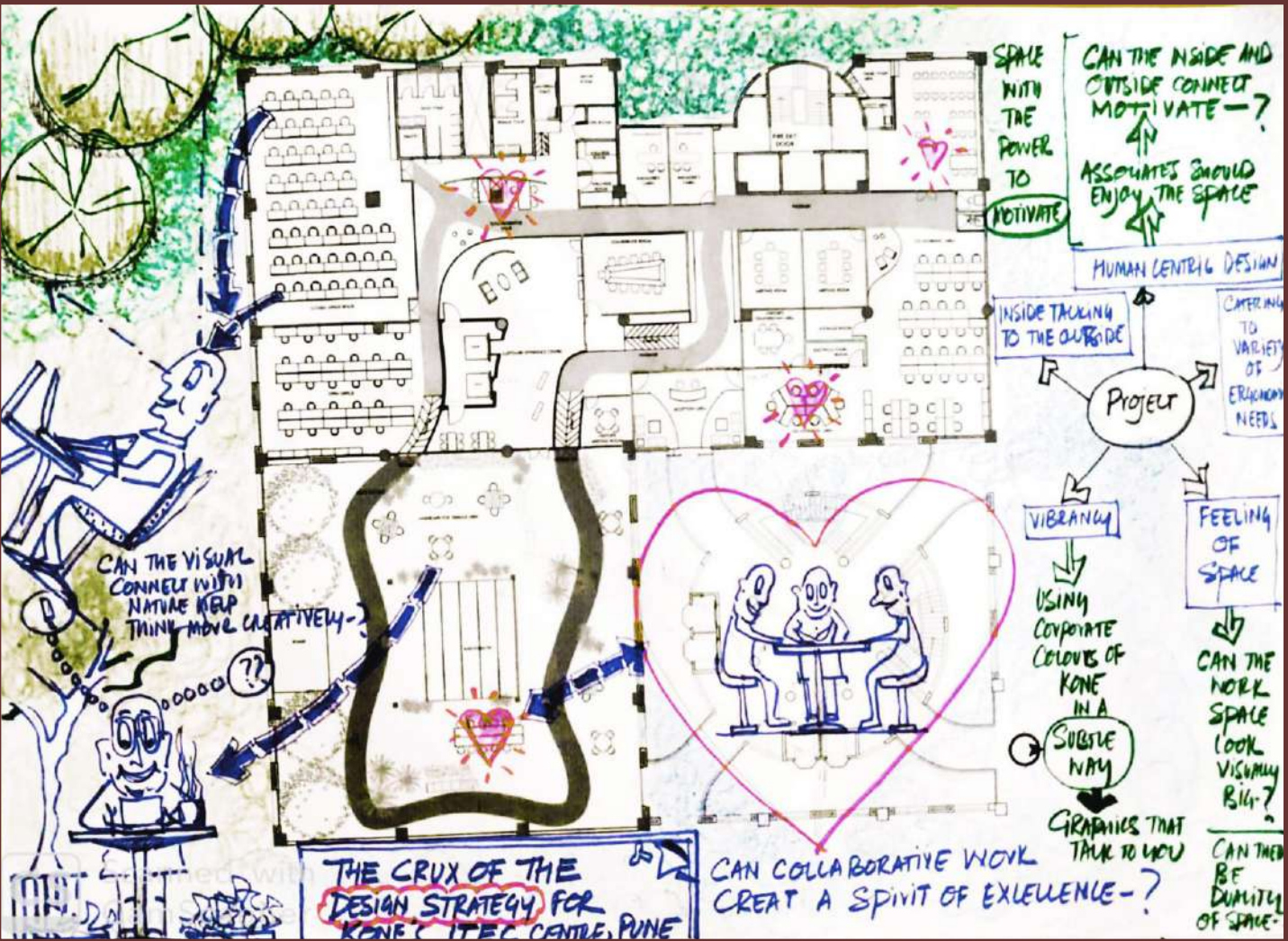
INDIAN TECHNOLOGY AND ENGINEERING CENTRE .

Location : Pune

Built-up Area : 20,000 Sq.Ft

Year of Completion : 2019

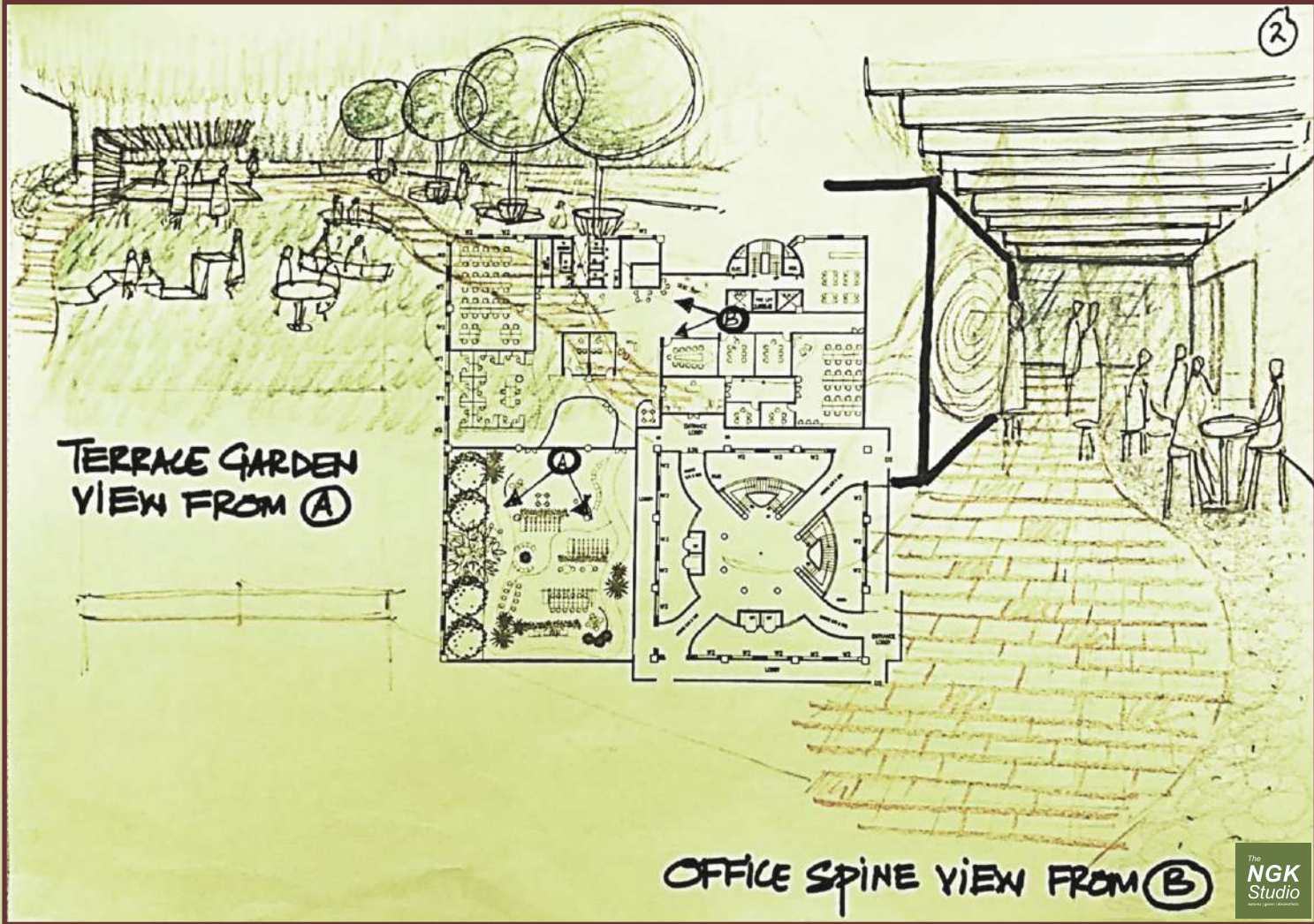
Initial Sketches : Development of Plan

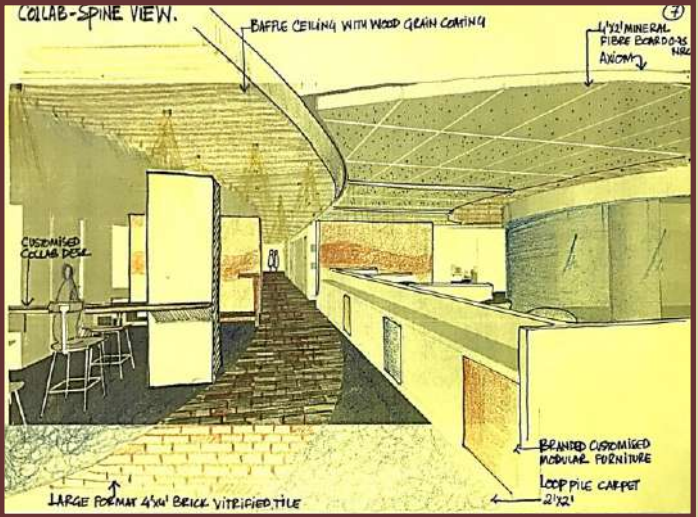
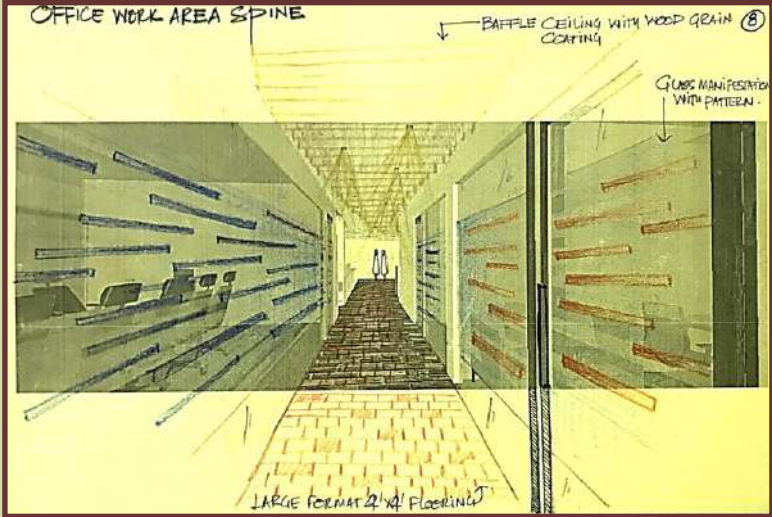


The concept is based on a street that unites the inside and the outside in an organic way, such that an **Unique spatial composition** is created.

Our quest has been to create a humane workspace that connects the inside with the outside and in doing so tries to positively touch the senses of the end users

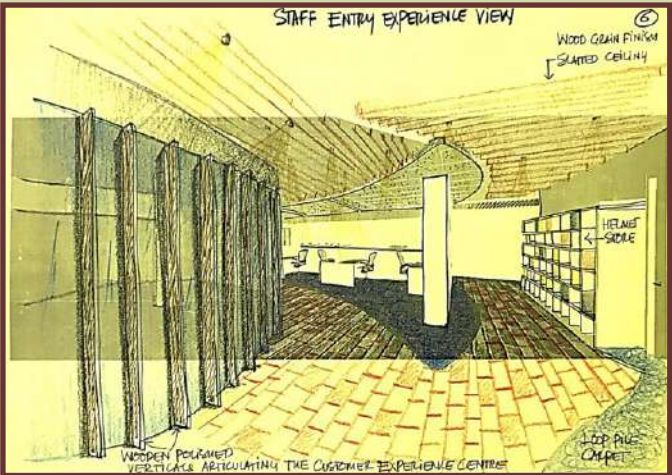
First Response Sketch





Spatial Exploration : View from point 'A'

Spatial Exploration : View from point 'C'

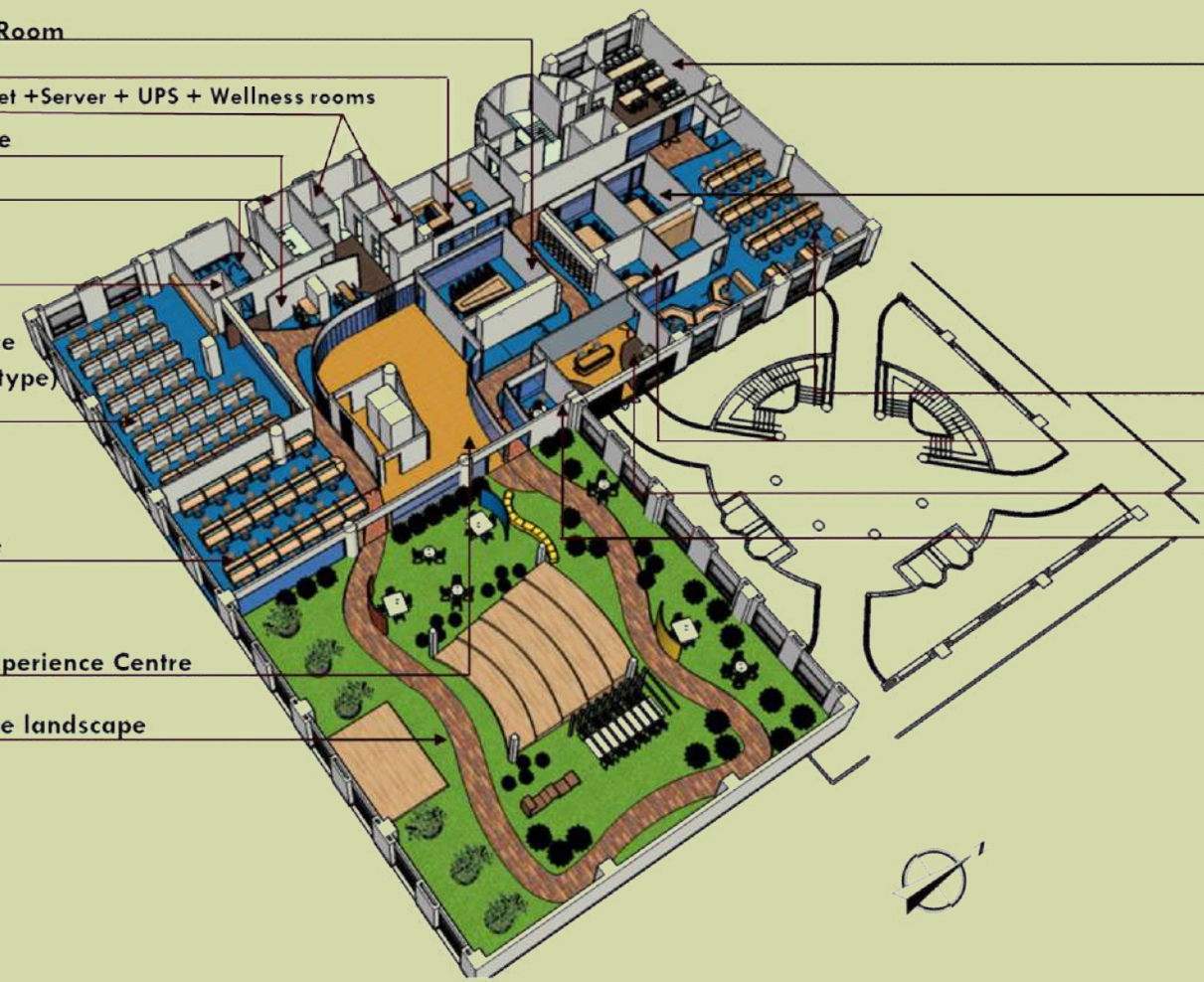


Spatial Exploration : View from point 'B'

Spatial Exploration : View from point 'D'

Floor Plan

- Conference Room
- Cabins
- Universal Toilet + Server + UPS + Wellness rooms
- Collaborative
- Toilet Block
- Pantry
- Closed Office (Classroom type)
- 46 Pax
- Open Office
- 27 pax
- Customer Experience Centre
- Collaborative landscape
- Garden



Cafeteria 30pax

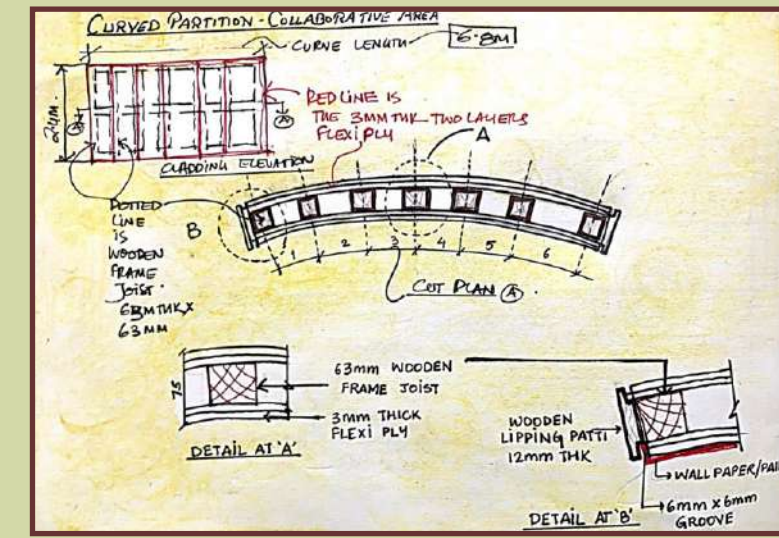
Meeting Room (7 seater)

Co working Space 35 pax

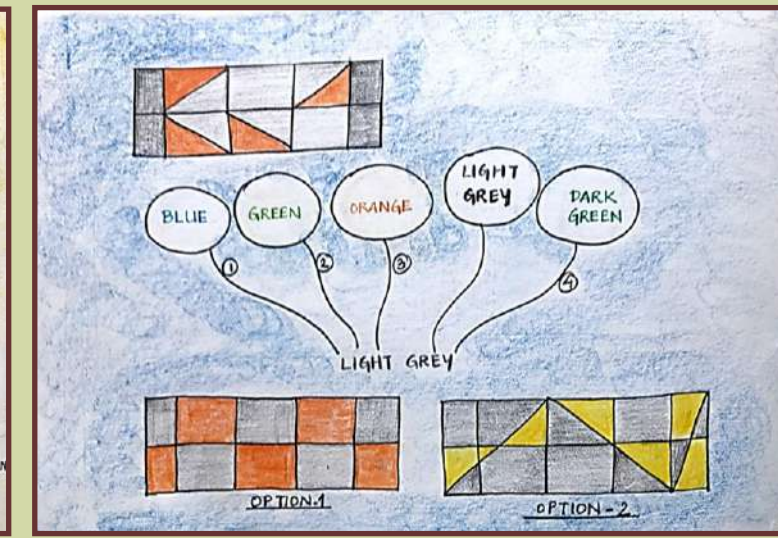
Visitor's Touchdown Area

Reception Area with Lounge

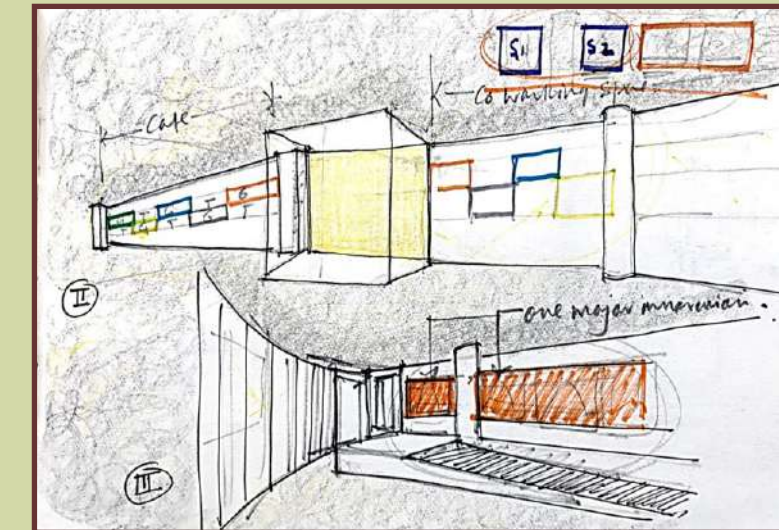
Visitor's Meeting Room



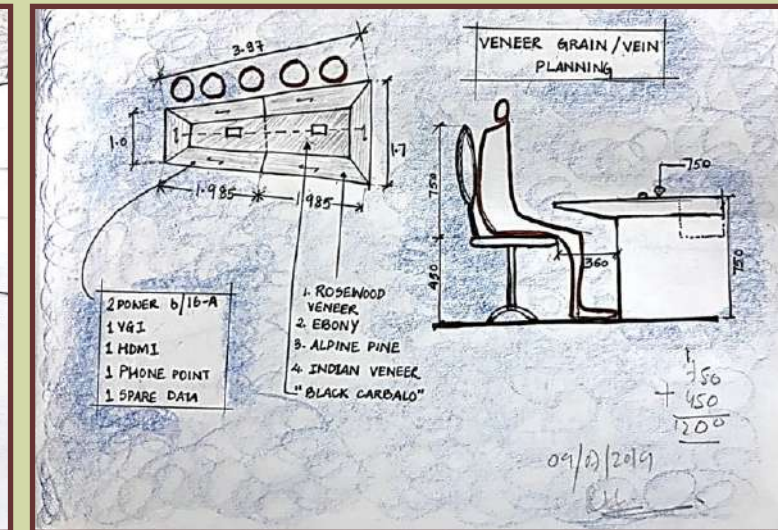
CURVED PARTITION – NEAR COLLABORATIVE AREA AND FOR CUSTOMER EXPERIENCE CENTRE.



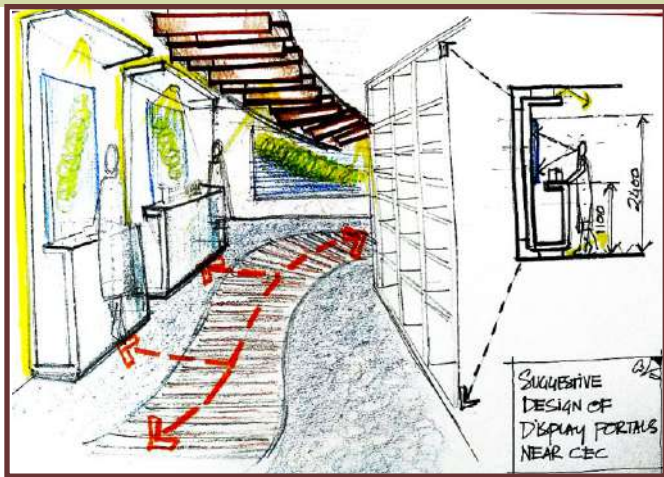
ECOFOAM PANELS USING KONE CORPORATE COLOURS FOR MEETING ROOMS AND CABINS.



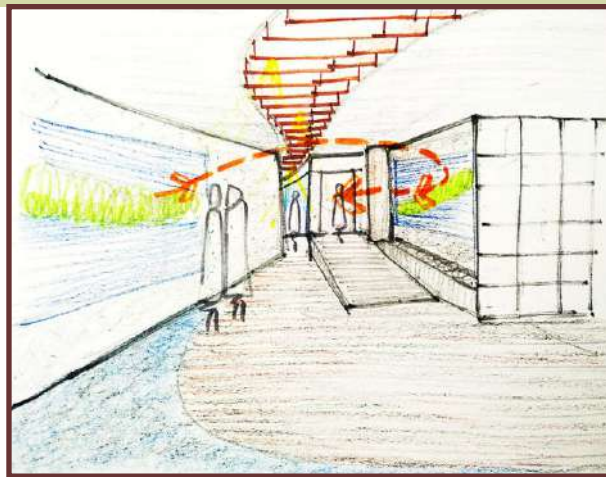
GRAPHIC DESIGN AT STRATEGIC LOCATIONS THAT CO-RELATE TO EACH OTHER.



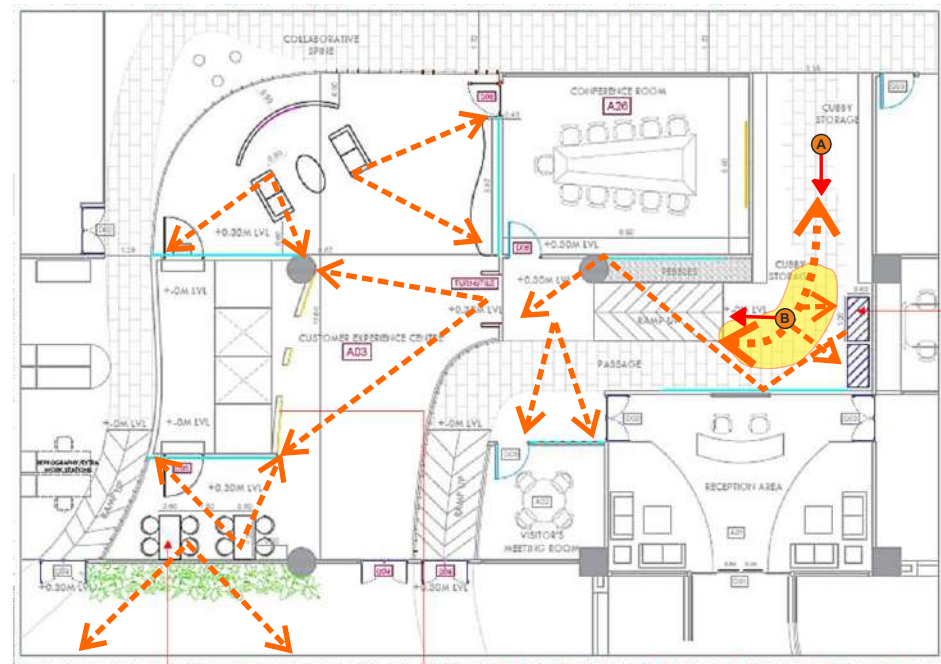
ECOFOAM PANELS USING KONE CORPORATE COLOURS FOR MEETING ROOMS AND CABINS.



Spatial Exploration : View from point 'A'
DESIGN OF DISPLAY PORTALS NEAR CUSTOMER EXPERIENCE CENTRE.



Spatial Exploration : View from point 'B'
STAGGERED GRAPHICS IN THE PASSAGE AREA VISUALLY TALK TO EACH OTHER.



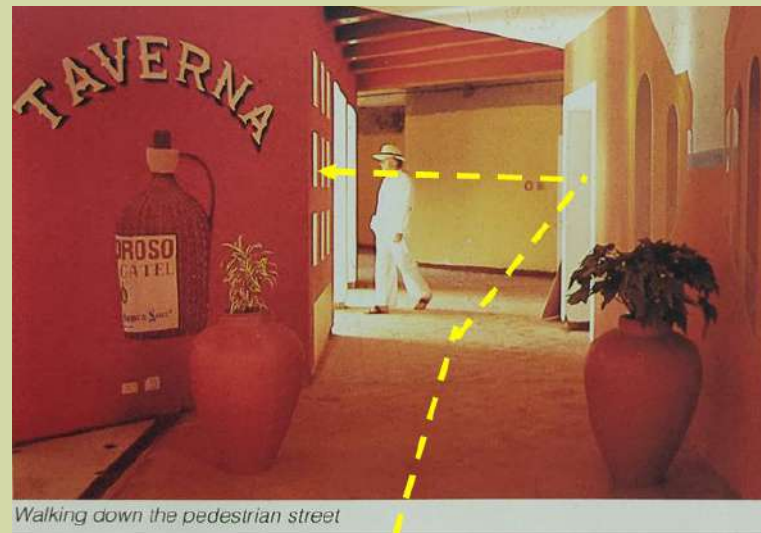
DISCUSSION SPACE

CORIAN CLADDING

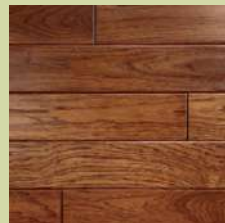
GRAPHIC POSITIONS

DISPLAY PORTALS

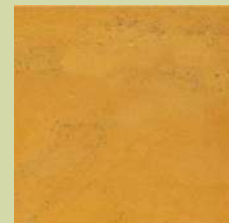
KEY PLAN



Walking down the pedestrian street



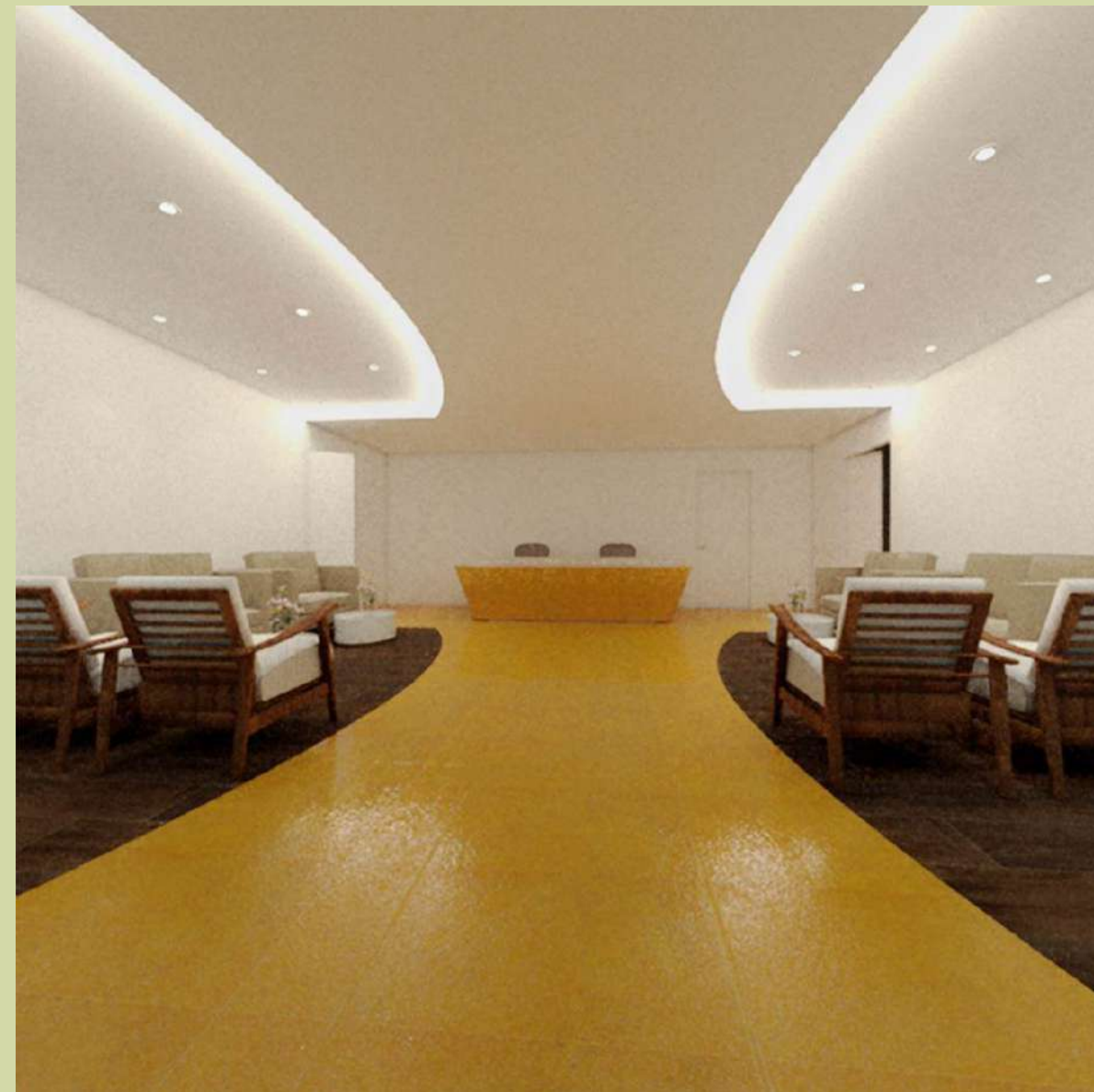
Wooden look alike vitrified tiles.



Jaisalmer Stone in Reception Area.

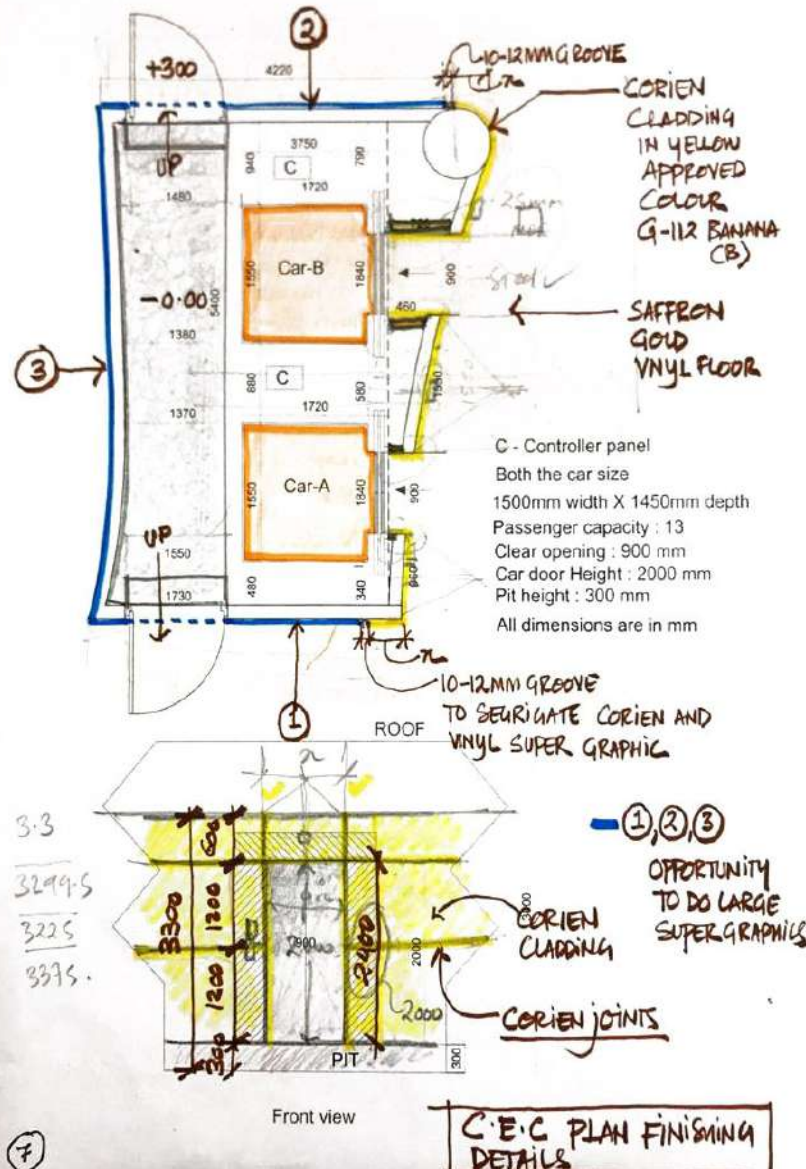
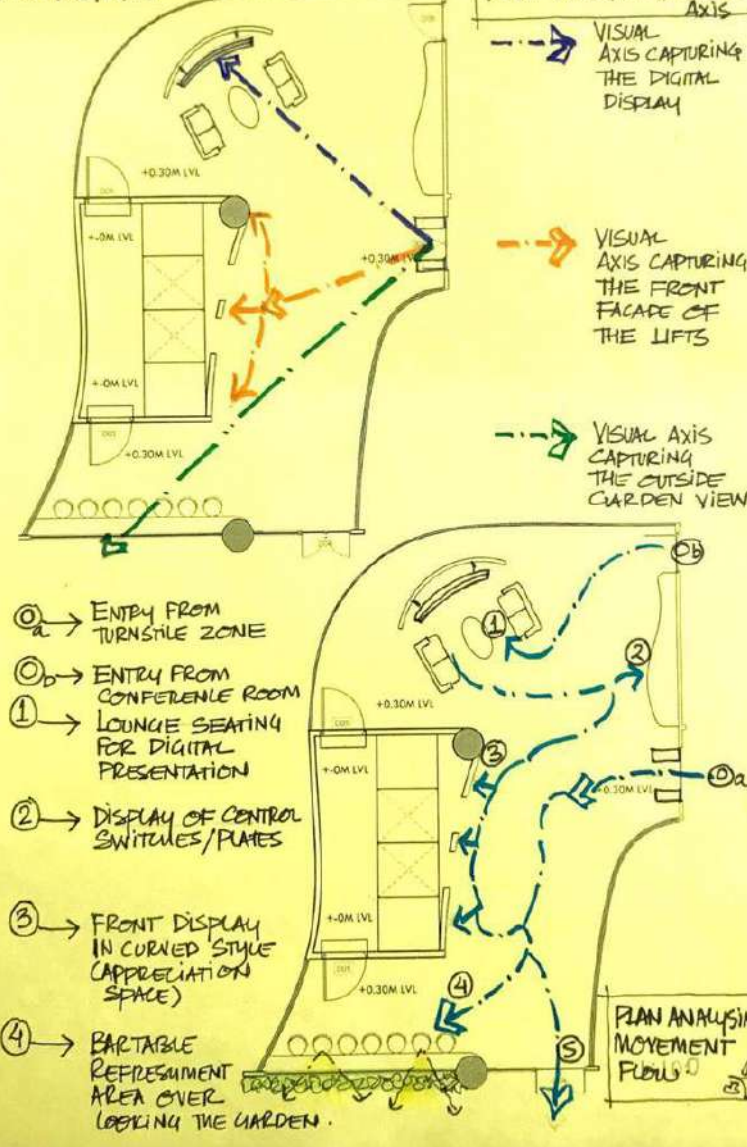


Jute sofa detail.



Spatial Exploration : Reception

PLAN ANALYSING VISUAL



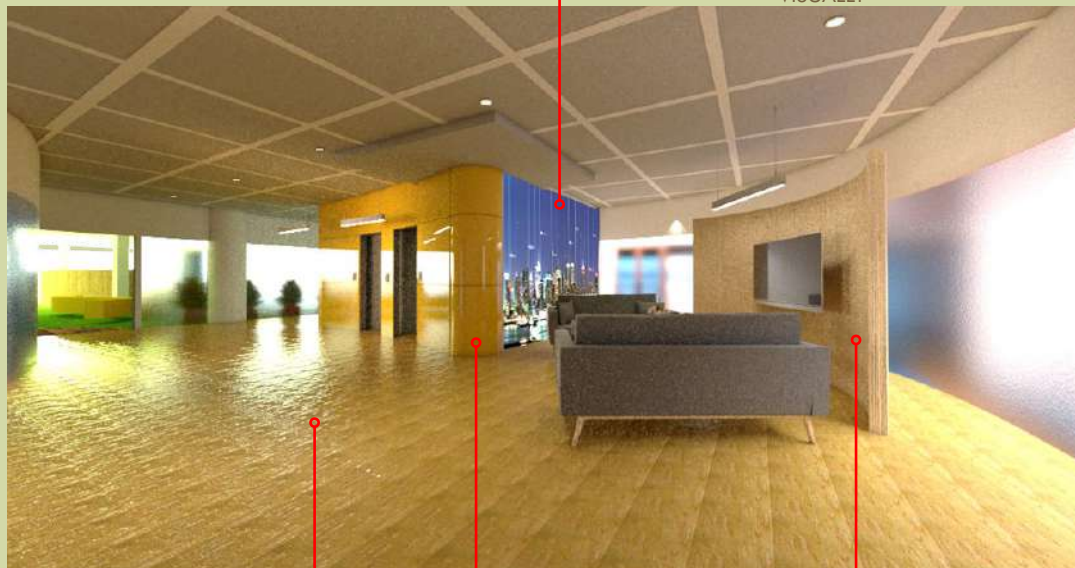
LARGE SUPER GRAPHICS ADD TO THE SCALE AND HIDE THE SERVICE DOORS.



SUPER LARGE GRAPHICS ON WALLS SHOULD CREATE DEPTH VISUALLY



Spatial Exploration : Customer Experience Centre Concept Sketch



Option 1



JAISALMER LOOK ALIKE VINYL FLOOR



CORIAN CLADDING

WHITE OAK PINE VENEER



NYLON CARPET

OUR EFFORT IS TO ARTICULATE THE SPACE WITH A MINIMALISTIC APPROACH.

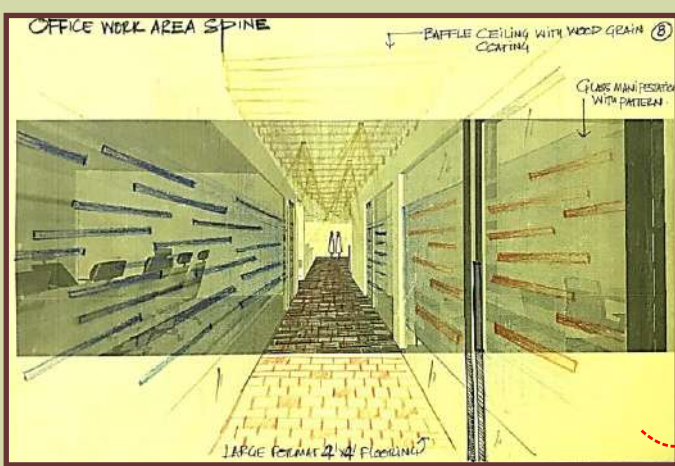
Concept Sketch



3D Visualization



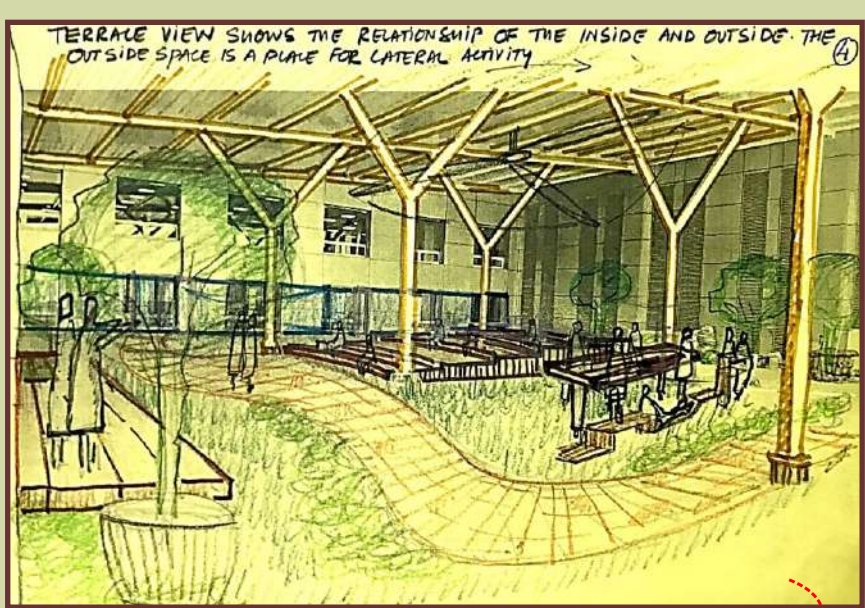
Concept Sketch



3D Visualization



Concept Sketch





Our objective was to craft spaces by use of color, texture, light and graphics.



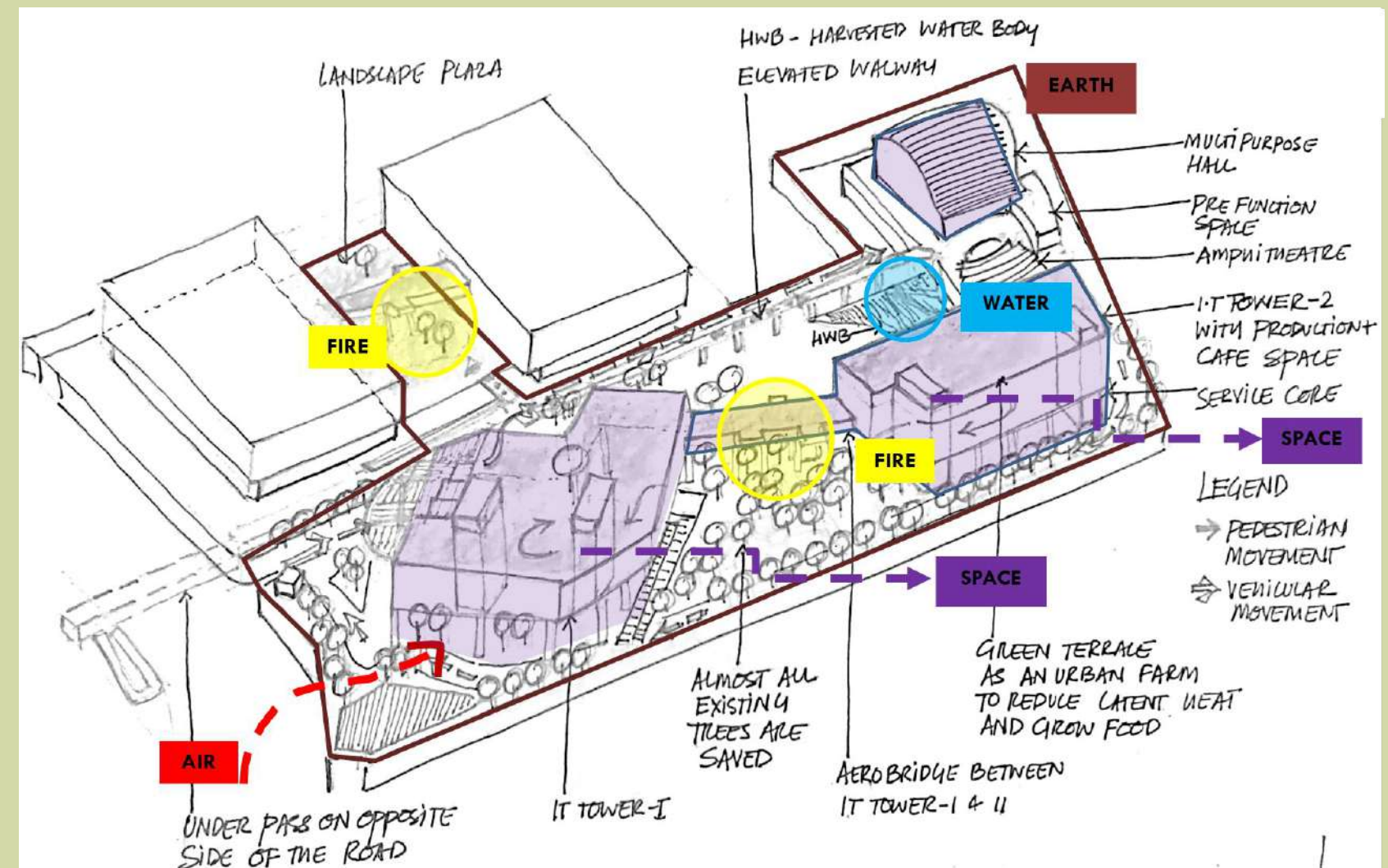
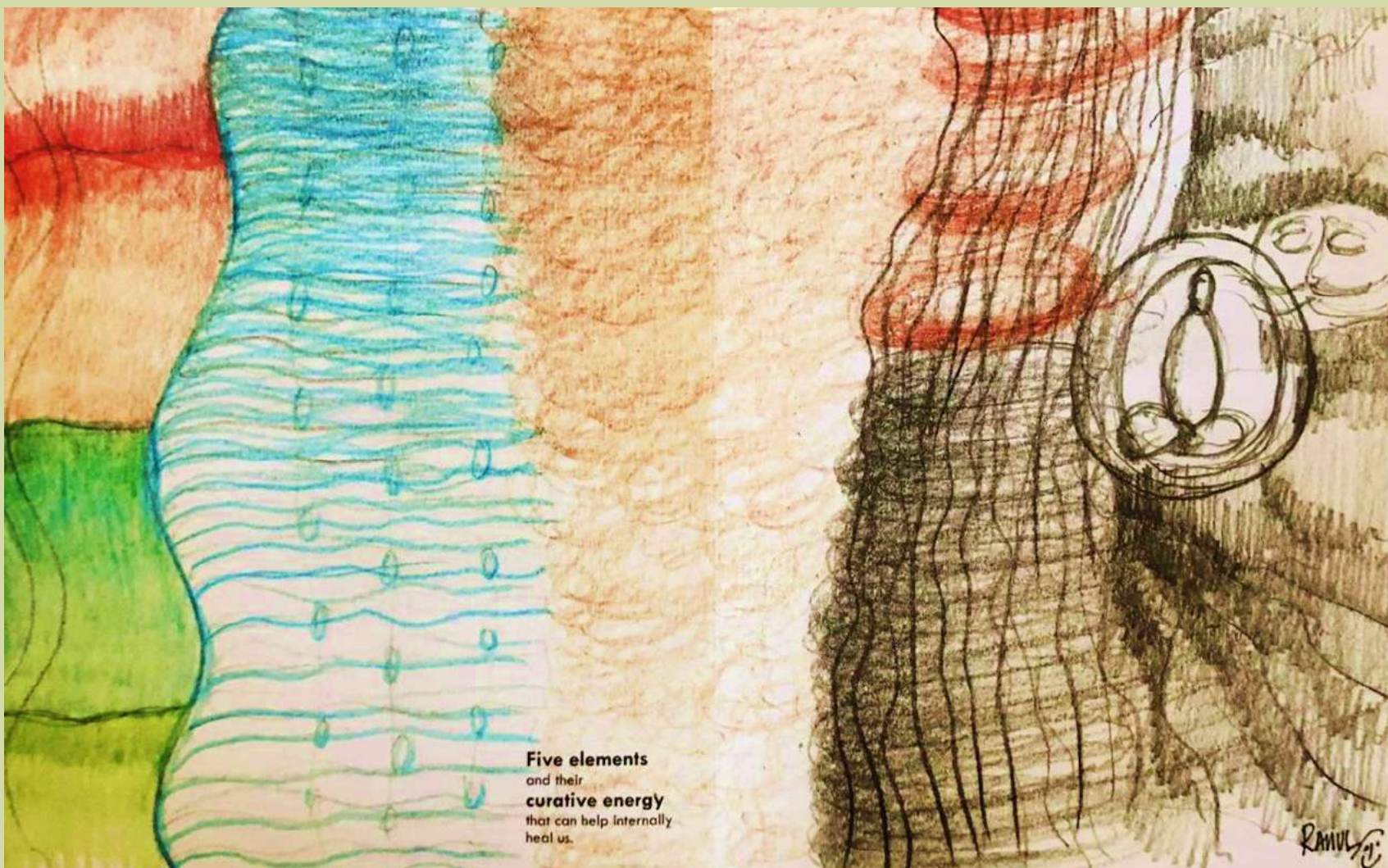
PROPOSAL FOR STRATEGY CONCEPT MASTER PLAN FOR A SOFTWARE SOLUTIONS COMPANY

Location : Pune

Land area : 10 Acres

BUA : 7,11,400 sqft

This was an Invited Competition and we came second.



- FIRE**
Knowledge
- WATER**
Harvesting
+ saving
- EARTH**
Retention
- AIR**
Ventilation
+ Freshness
- SPACE**
Holistic
experience



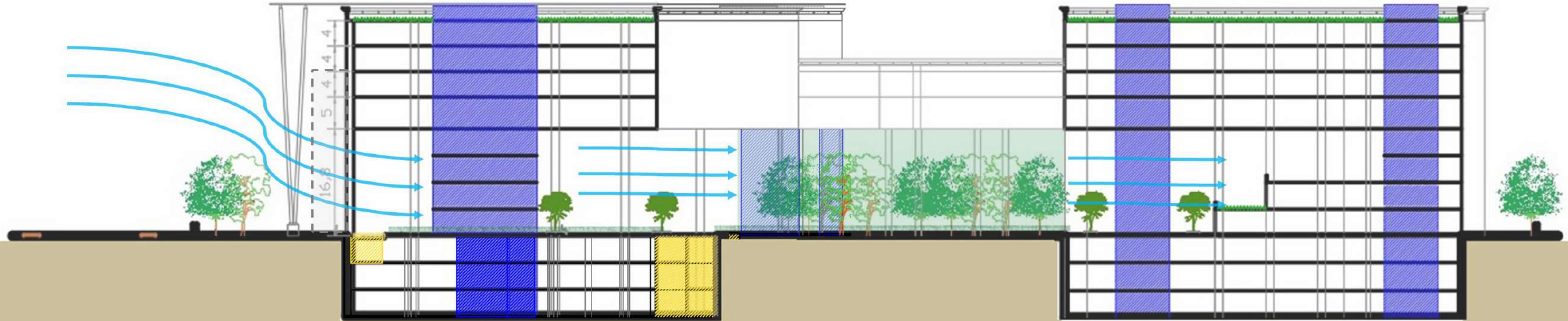
FIRST RESPONSE AT SITE

The main focus of our architectural response was to save 48 trees of 16m height that existed in the centre of the site.

I.T. – Tower - A

Aero Bridge

I.T. – Tower - B



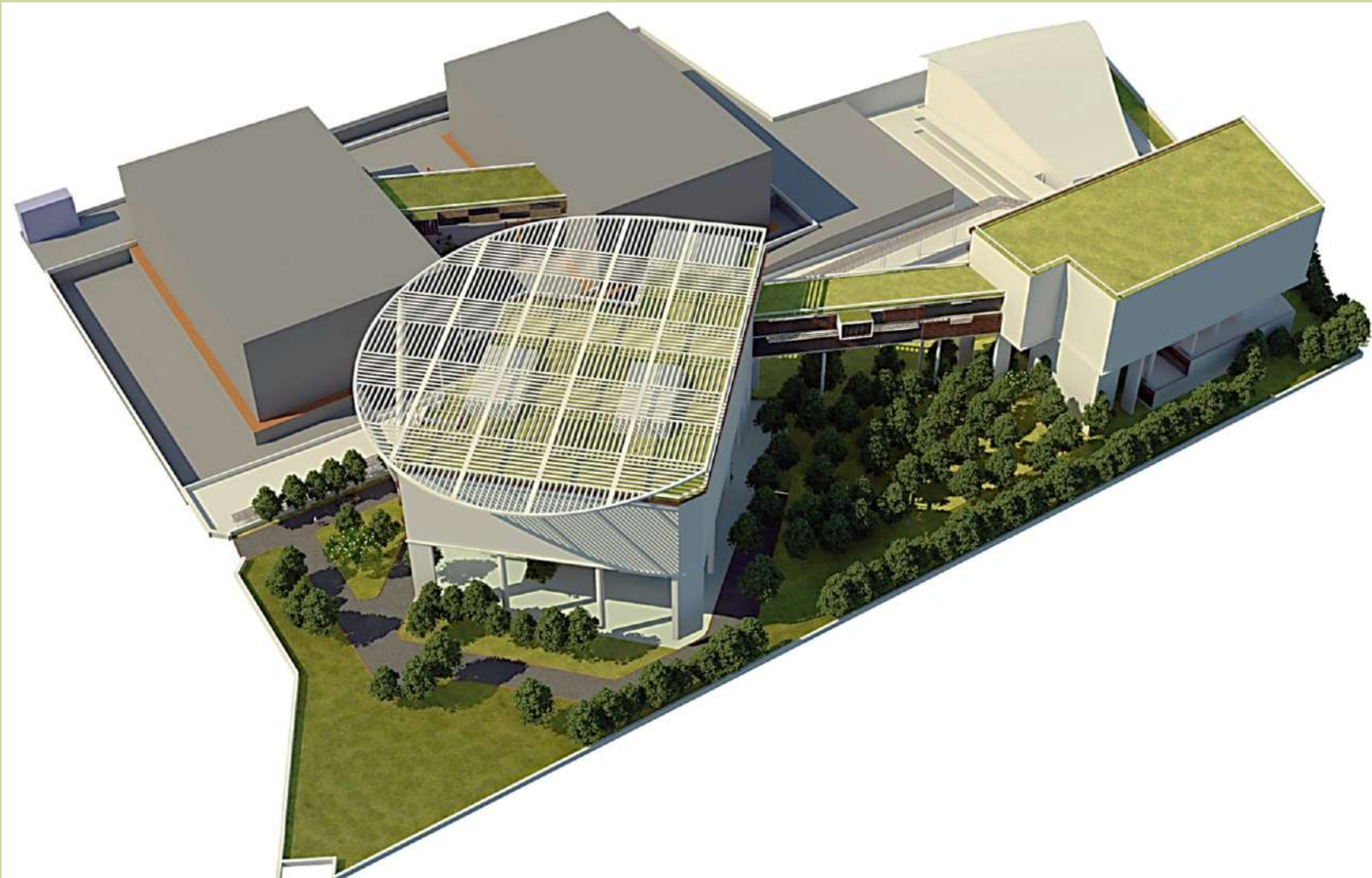
TOWER I (C) PLAZA LEVEL,
ENTRANCE FOYER, INTERACTIVE AND COLLOBORATIVE SPACES.

OPEN AIR PLAZA WITH RETAINED TREES AND OVER BRIDGE WITH
MEETING ROOMS

CAFETARIA PLAZA WITH SEMIOPEN SEATING AREA AND TERRACES



KEY PLAN



Trees are one of the most valuable resource that we need to save !

The
NGK
Studio
natures | green | kinaesthetic

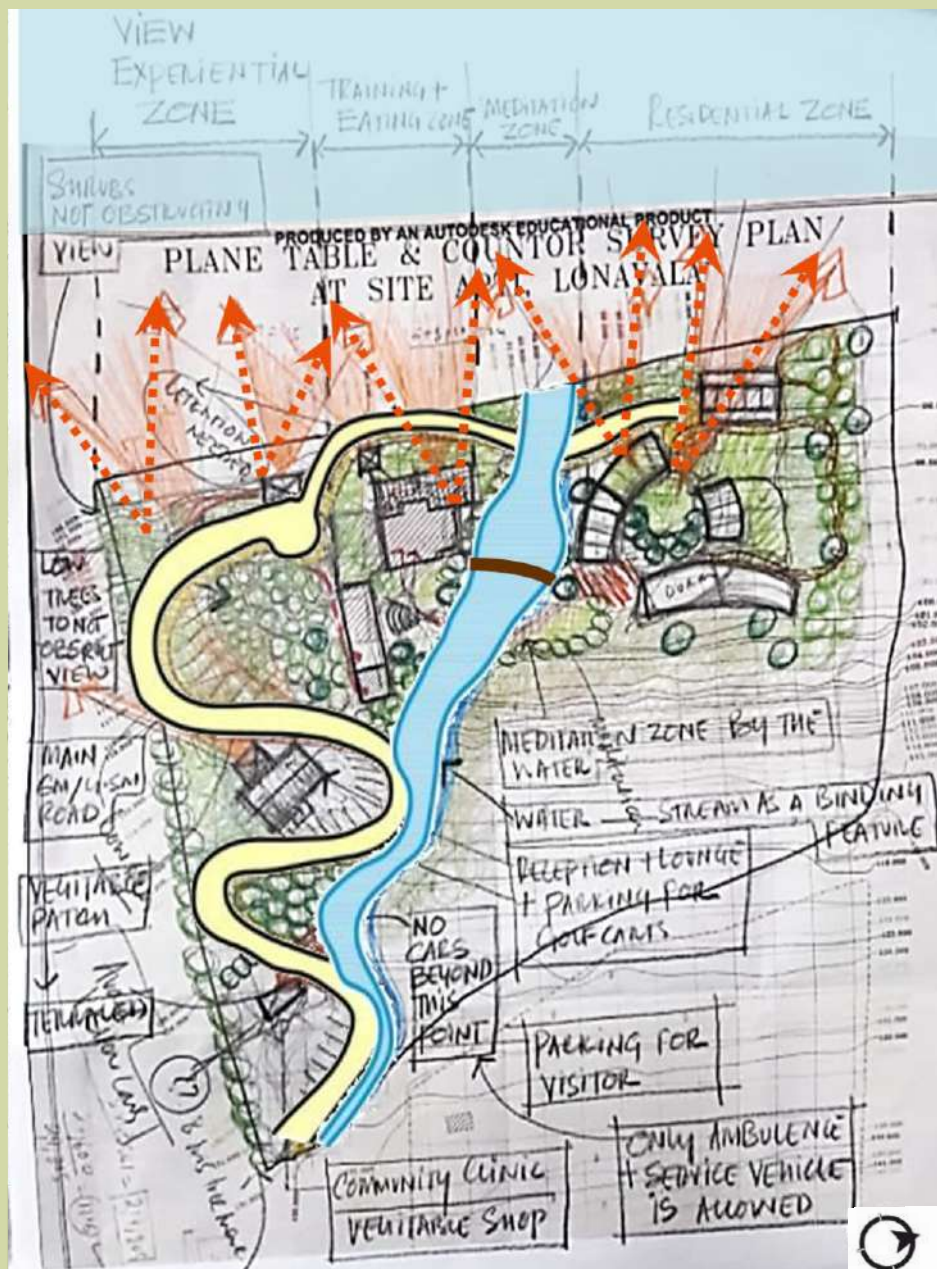
IN THE LAP OF NATURE

Healing Centre in the Lap of Nature

Location : Lonavala

Land area 5 acre , BUA : 31,324 sqft.

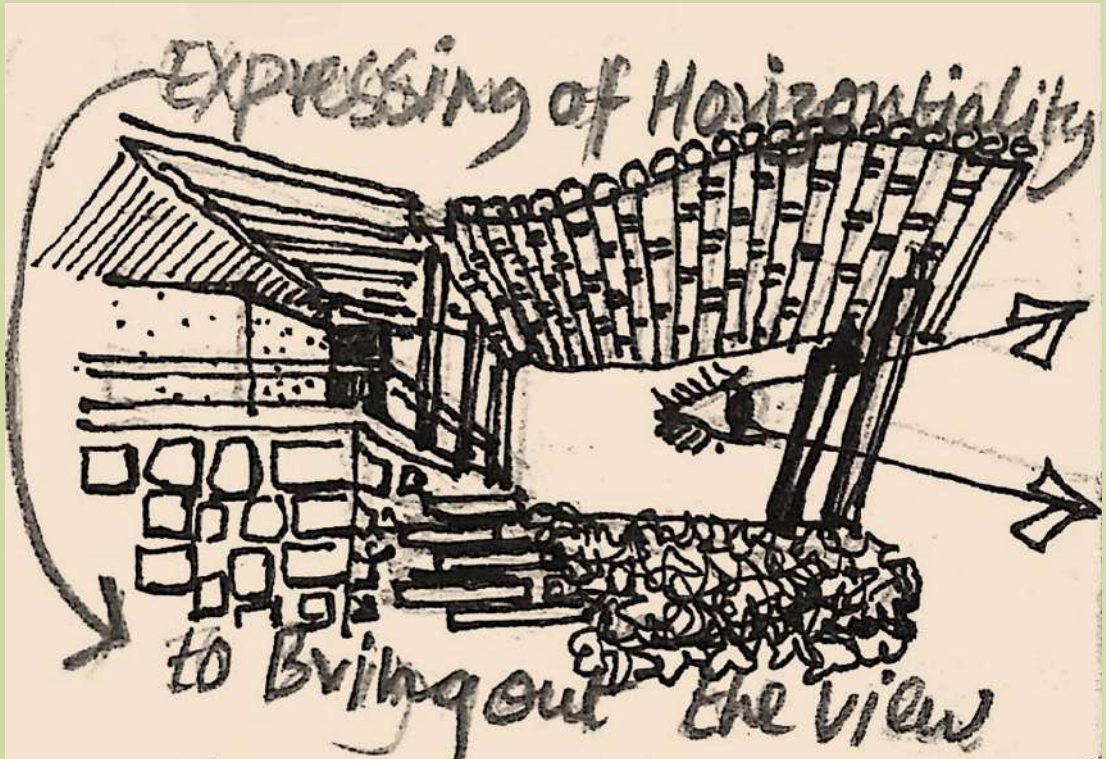
Project Status : On Hold



Conceptual Level Plan :
First master plan sketch diagram.

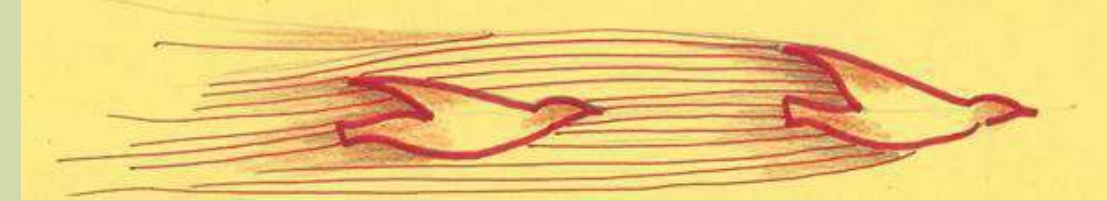


Option 1 : Master plan .



Before

The Flight of Birds manifesting into a built forms has always inspired us.



Evolution of Architectural Form-Cafeteria



Option 2 : Master plan .



View of Orientation centre + Doctor's residence



Site Section showing the dormitory, treatment and dining.



Halasana posture inspired us to design the roof of training room.



Kitchen Dining & Treatment

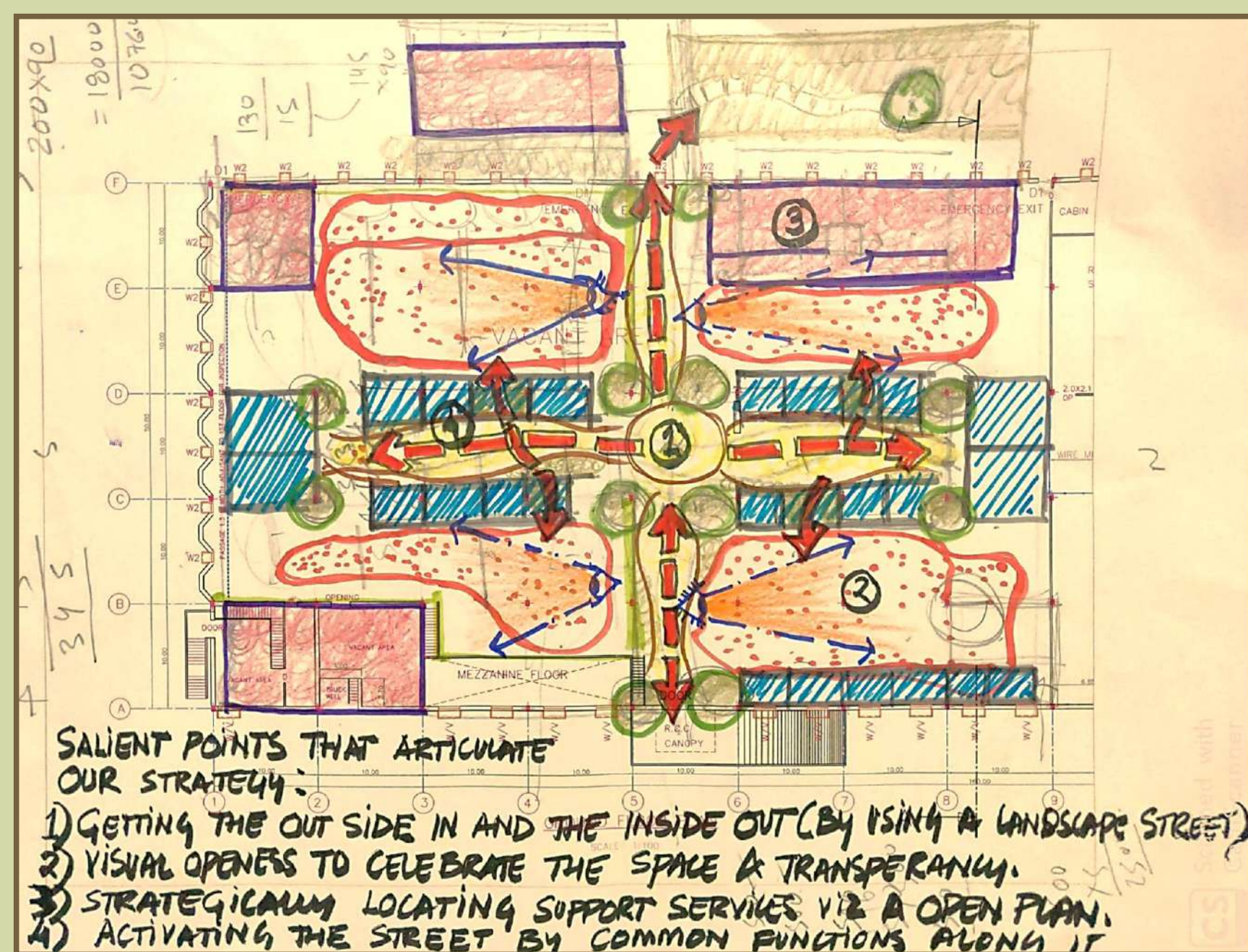
The
NGK
Studio
natures | green | kinaesthetic

THE WORK SPACE

Location : Pune

BUA : 45,000 sqft.

Project Status : On Hold temporarily

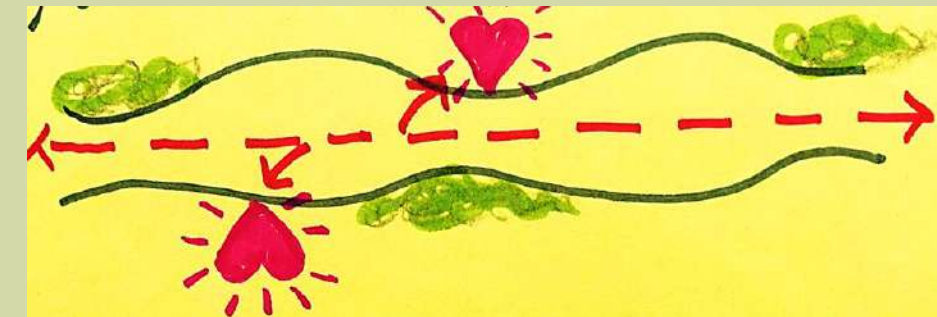


- Getting the Outside in and Inside out.

- Visual openness to celebrate the volume.

- Locating support services along the periphery.

- The street is activated with common functions.





After



Before



Simple & sensitive ideas can repurpose an old derelict space into a **very warm , vibrant and motivating one.**

The
NGK
Studio
natures | green | kinaesthetic

RESIDENTIAL SPACES



We provide an end-to-end 'design and build service, the approach to every project is **holistic**, with a high degree of detail invested in both the design process and construction finish. The spaces we create are reflection of our clients personality.

The feedbacks from our residential clients are really motivating and encourage us-

“Design has changed the Mood of the space.”

“External Views are well framed now.”

“Visitors love our house and want to spend more time here.”

“Utilisation of space is efficient than before.”

“The house looks Big.”

“The space has a Spiritual Character now.”

“Our House has a Wow effect now.”

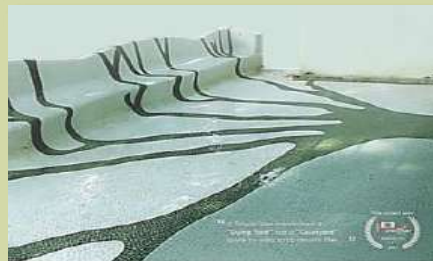
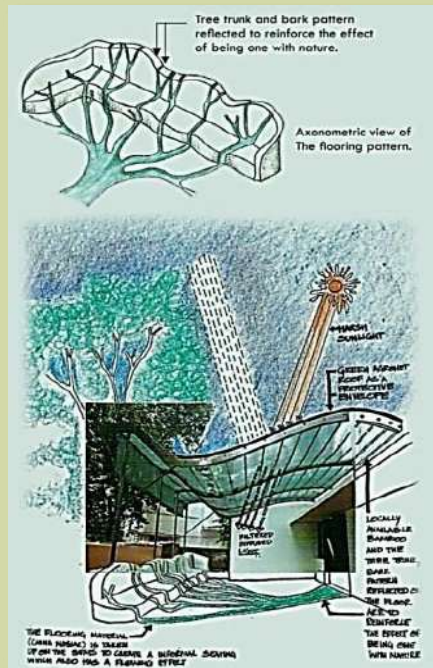


We desire to make **strong and lasting connections** with clients in order to fully appreciate the purpose of each and every project, and achieve outcomes that are matched directly to the client requirements.



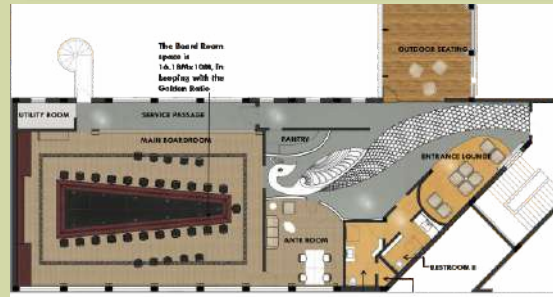
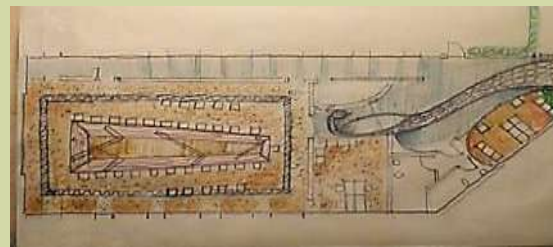
S

Area:
344
sq.ft



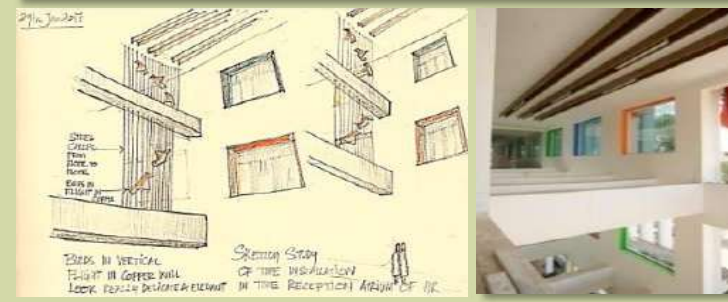
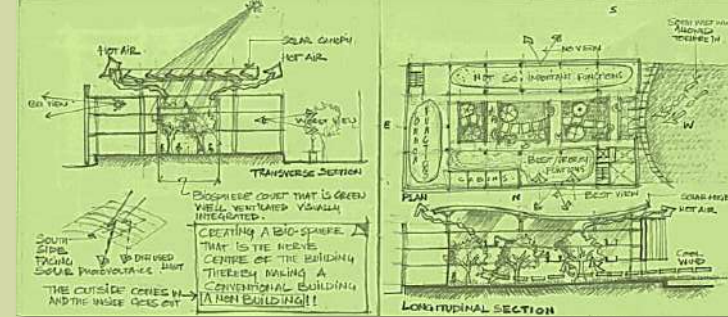
M

Area:
6,818
sq.ft



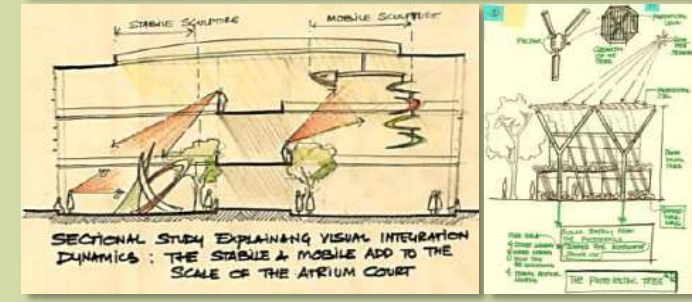
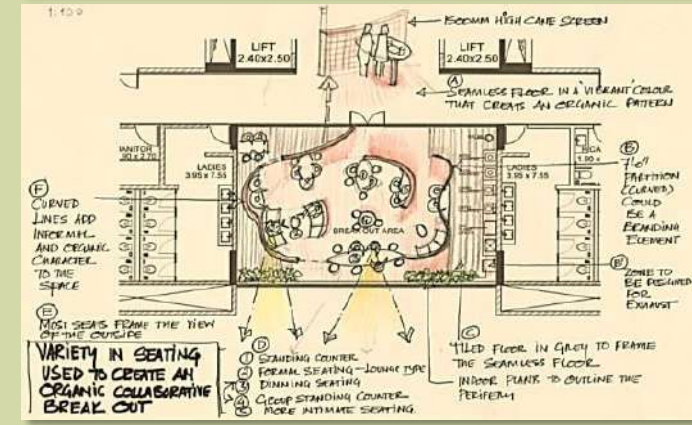
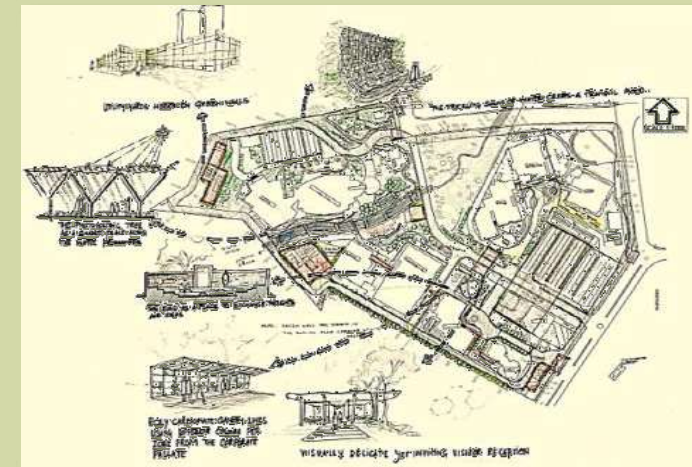
L

Area:
24,083
sq.ft

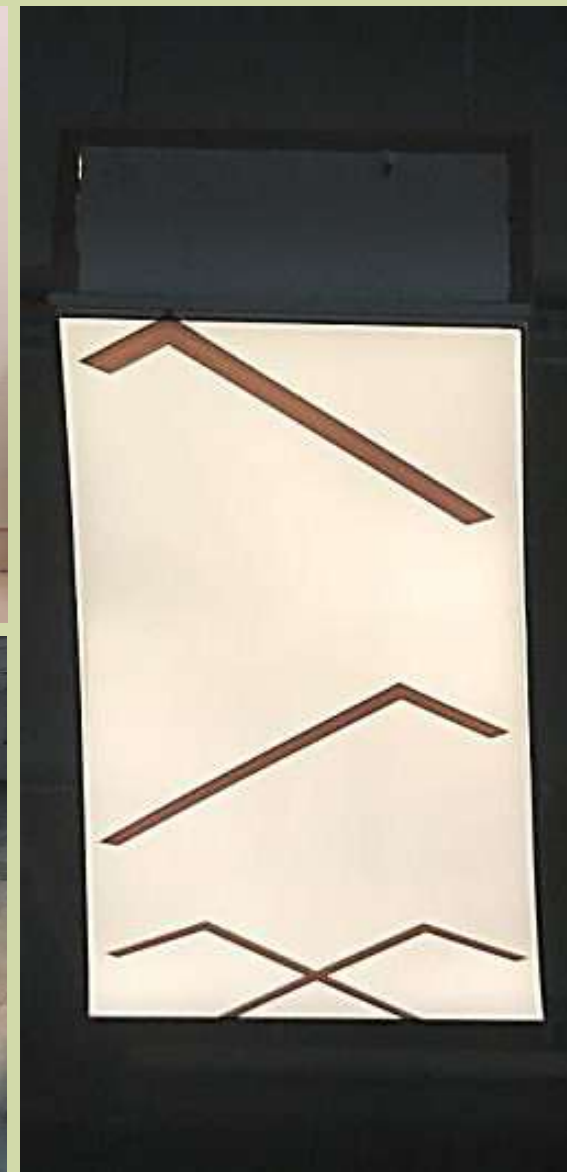
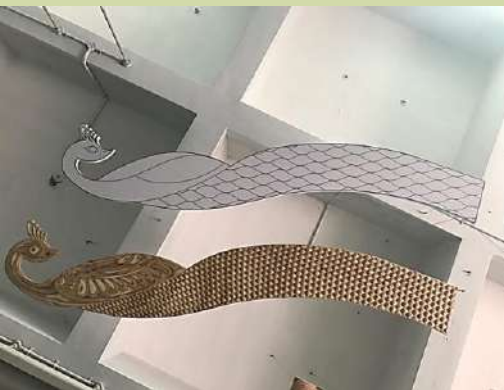


XL

Area:
25
acres



We have been designing diverse scale of projects and this gives us an **Edge of Variety...**



Mock ups and **Material Sample Research** is a big part of how we work.

Awards and nominations are a **vital vitamin** and **intellectual currency** to us.

Year
2001



Year
2013-14



Year
2014-15



“ Our founding partners have been a part of many award winning projects and for them awards are like currency... they motivate the team at the NGK studio to set high standards for every project they wish to participate in... ”

Year
2016



Year
2017 & 2018



20 Best unbuilt projects

Year
2018



Selected amongst the 4 best commercial projects

Our works are published with



Through the medium of public dialogue, the philosophy at The NGK Studio is to foster and share best practices.



Quantum Life University

Our Esteemed Clients that have been a part of our **Growth Trajectory.**



Ar. Rahul Kadam

(Founder Partner/ Principal Architect)

An alumnus of BKPS College of Architecture, Pune, India. Ar. Rahul Kadam did his masters from South Bank, London, and was a student member at AA London. He travelled extensively before beginning work with leading architects like Ar. Bimal Patel, Ar. Hasmukh Patel, Ar. Kamal Malik and Ar. Karan Grover. He has been a Director-Partner at Edifice Consultants Pvt. Ltd. for over 15 years, handling **diverse portfolios like hospitals, hotels, special economic zones, IT campuses, schools, corporate spaces for global MNC's such as:**

- CITI Bank
- Master Card
- AMDOCS
- TCS
- Credit Suisse
- CISCO
- CDK global
- PTC
- TATA Chemicals

Note : (Designed and delivered project works spaces in a corporate career of 15 years was 4 million sq ft). in a cutting-edge corporate environment. Finally, to start his own firm The NGK Studio. As a founding partner of the NGK Studio, he leads various diverse project typologies as the principal architect. The NGK Studio has serviced clients such as:

- Bajaj Auto Limited
- MAHLE Inc.
- Knight Frank
- KONE Elevators
- WILO
- JLL
- FISERV
- Elpro International LTD.
- Capgemini

He is a strong follower of the need for Sensitive & Sustainable Designs to pervade in all sectors of architecture and design. He has taught and mentored in several architectural schools in India. Also, presented papers on subjects related to Design and Planning in India and overseas. **He has travelled over various countries for project assignments and for studying architecture. His quest for excellence** has won him awards of repute in a career spanning over 24 years.



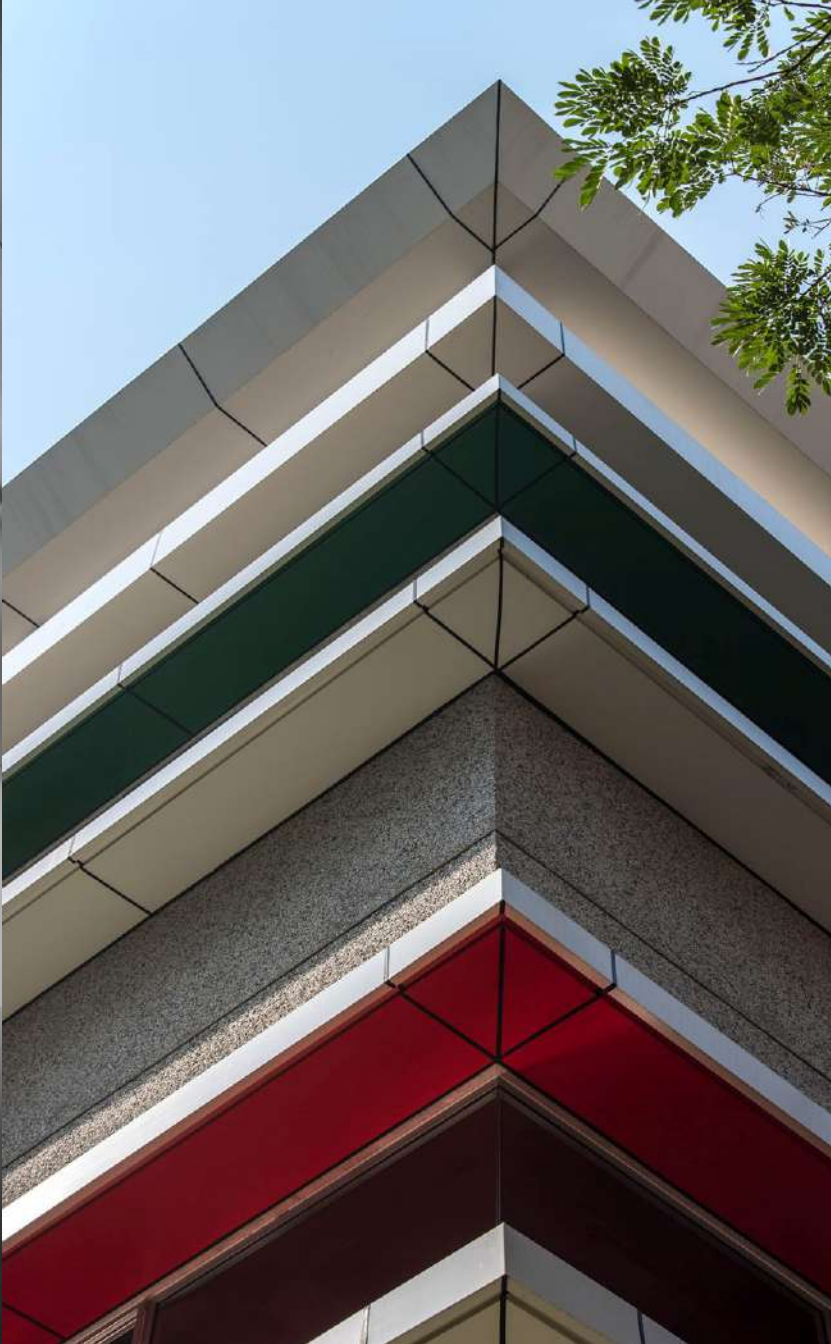
Ar. Nandini Kadam

(Founder Partner/ Principal Designer)

Nandini Rahul Gaitonde Kadam graduated from the LS Raheja School of Architecture, Mumbai. After gaining experience in national studios likes STUP and Edifice, she set up private practice with her husband, Rahul Kadam in Ahmedabad.

With a keen interest in crafting spaces in a sensitive way, Nandini has worked on a variety of project typologies like residential spaces, workspaces, adaptive reuse projects, etc.

Currently she co-partners the NGK studio in Pune. Of late she also has been involved in creating landscape spaces at the NGK studio, with some Architectural, Landscape and Interior Architecture assignments. Her deep rooted commitment towards the projects she designs, has helped service several satisfied clients and some of her work has been recognized by respected award forums. In last five to six years she has finished almost 25 residential interior projects of various scales and sizes with very satisfied clients.





A pin joint coloum holding 9.5 m x 9.5m canopy.



17m long peacock done by using latest laser cutting technology.



Half an acre redundant waste plot converted into an 'Urban Forest' using waste materials.

Our First



Building proposed was raised by 16m to save 48 trees at site.



'V' truss span increases from 20m to 43m to facilitate a column-free space for a multi-purpose hall.



Our First



23m column free Post-tensioned (PT) span in expose concrete.



“ Nature will always be our composer
to create meaningful frozen music.... ”

Thank you

