

9

"A Humane Workspace"

K.S.B.



Built



Business



Large



Greenfield

Location: Shirwal, Pune

Design area: 2790 sq. m. | 30,000 sq. ft.

Year: 2023

Occupancy: 190

KSB Administration office building for the nuclear division, is a design project that explores the impact of architecture on the productivity factor in a work environment.

Design evolved from a deep understanding of how the workspaces have evolved over time and what are the advantages and disadvantages of adapting certain strategies in a workplace.



Client : KSB

Client Team: Prajyot Deshpande and Vinit Deore from (the Real Estate team and Facilities Team of KSB)

Architectural Team: Jointly by NGK team and Shandar Interior Pvt. Ltd (SIPL) team

NGK team: Rahul A. Kadam , Shubham Lakhare , Harsh Pandey and Rachana Chandwani

SIPL team: Archana Bante, Parag Darekar, Shekar Kulkarni

Landscape Architects: NGK team with Architects United (AU)

Building Architect: Architects United (AU)

Consultants: All consultants were under Sub-contractors

Contractors: Principal Contractor was SIP, lead by Kapil Raheja from the SIPL leadership, with Gururaj Banne , Kalayan and Landscape- Satguru Landscapes.

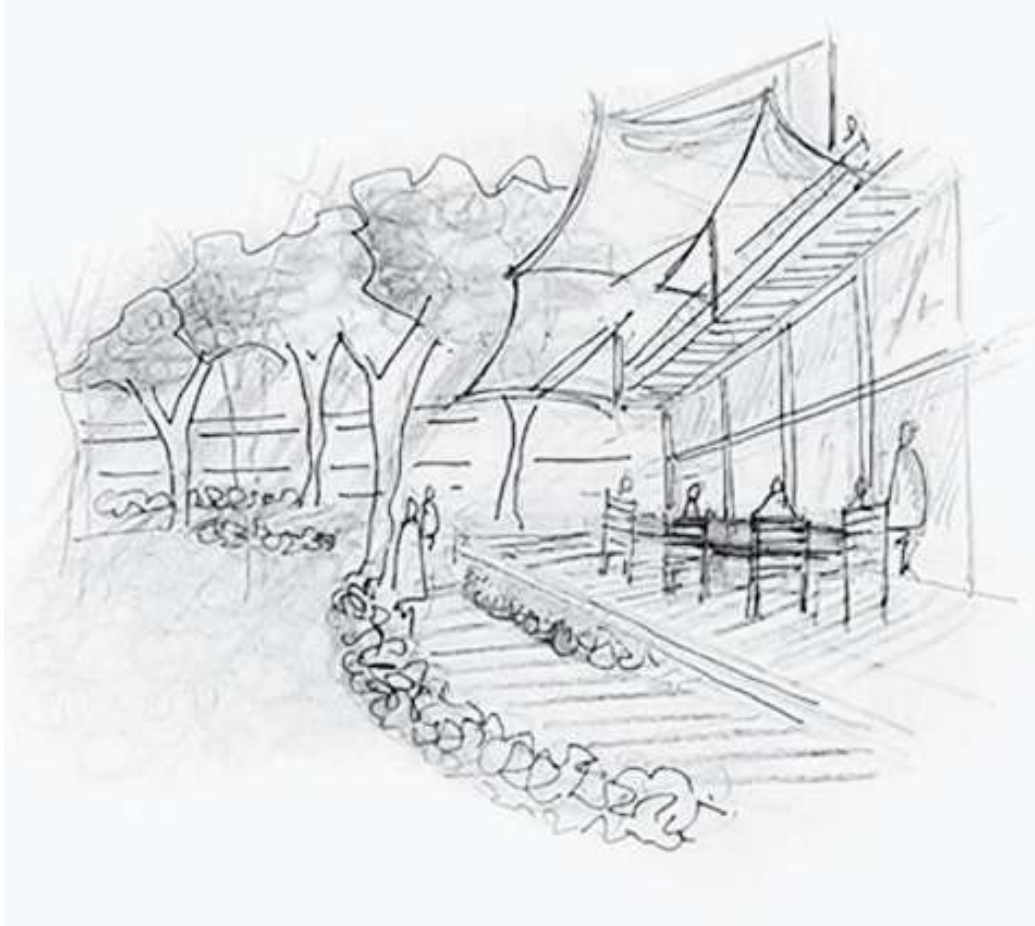
Photographic Documentation: Anirudha Karmarkar, Studio 360

Sketches and illustration by: Rahul A. Kadam and Parag Darekar

Recognitions:

The project was an invited competition done in collaboration with SIPL.

We were 1 of 6 shortlisted consortiums.



We like to explore the spirit of the project. Something that is often hidden behind the functional requirements and project economics



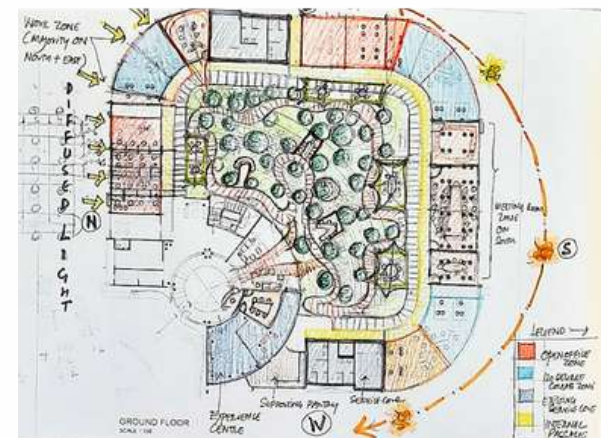
Situated within the premises of KSB Ltd. (Nuclear Power plant division) in Shirwal, near Pune, a dedicated 30,000 sq. ft. space has been carved out for the administration office.

The site is conveniently positioned approximately 1.4 km from the nearest connection point to the Pune-Satara highway.

As the site is somewhat isolated, it was important that the users working in the administration office find a sense of home in the spaces. The project also aimed to embody the company's identity, fostering a connection between employees and the brand's values.

Considering this, the following attributes have been chalked out to drive the design of the office.

1. Agility
2. Openness
3. Connect with Nature
4. Collaborative Spirit
5. Motivation

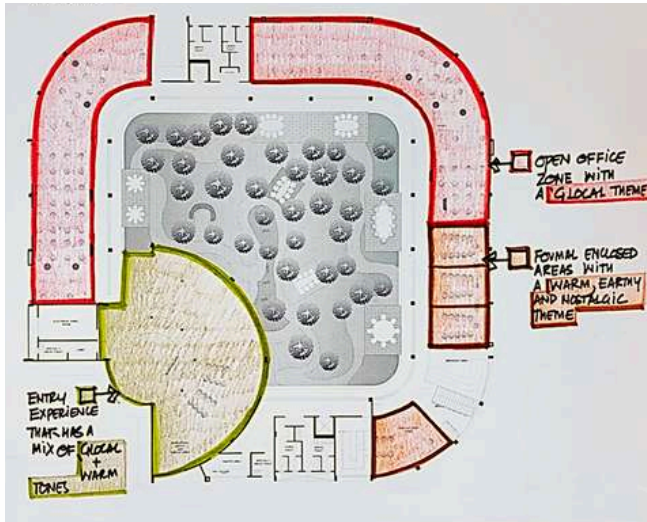


Initial Concept Sketches

'Courtyard as the nerve center'

The design's fundamental principle is incorporating natural elements for enhanced productivity.

The central courtyard, akin to a mini forest, serves as the building's lungs, reinforcing this commitment to a natural and productive environment.



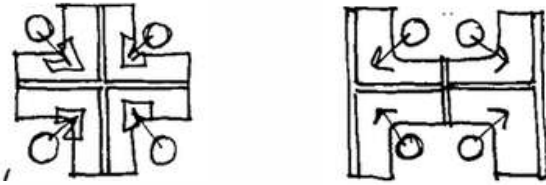
On a broad level, the spaces are divided into 3 different zones.

1. The entrance zone with reception, waiting and exhibition space.
2. The open office with workstations and informal discussion spaces and
3. Formal areas like meeting rooms and directors cabins etc.

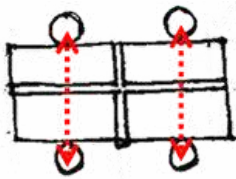
The spatial layout is strategically designed to optimize natural daylight exposure within work-spaces, promoting a well-lit environment.

Simultaneously, measures are implemented to mitigate heat absorption, ensuring a comfortable and energy-efficient building ambiance.

Analyzing Workspaces

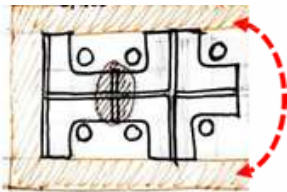


Cubicles promote individual focus but hinder collaboration and knowledge sharing, fostering a 'My den!' mentality.

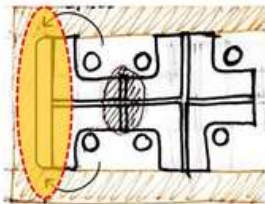


Introducing an open office with linear workstations aimed for a flexible and interactive workspace, yet it had its drawbacks.

Agility in Workspace

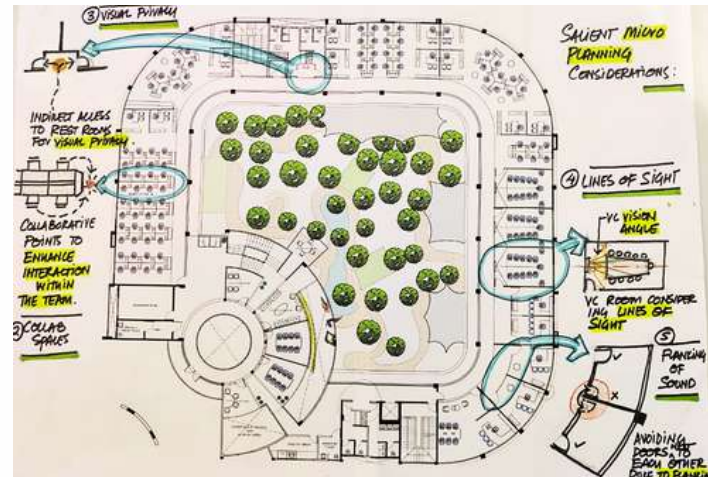
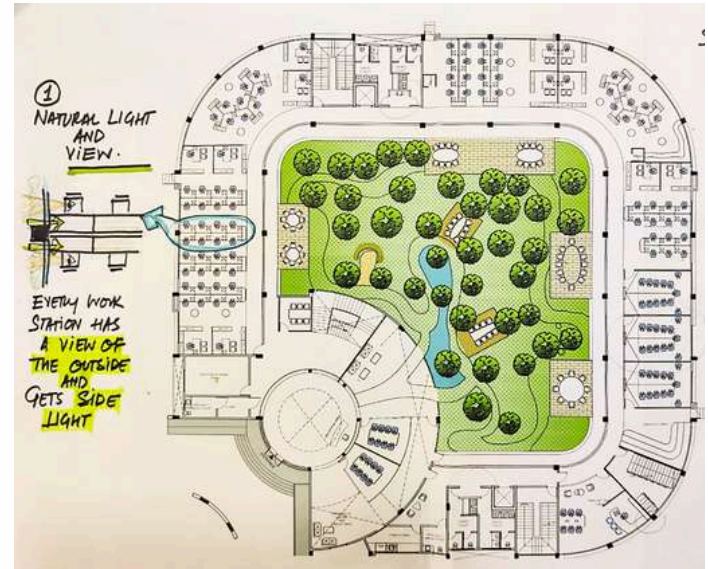


Workspace agility aims for heightened productivity, fostering swift collaboration and knowledge sharing.



Strategic placement in both 90 degree workstations and linear workstations results in an agile workspace.

Evolution of Workspace for KSB



Hence, various strategies were sketched to explore how the workspace can be made more agile along with the conceptual framework that has been laid down.

Both the Linear and 90 degree workstations were explored to see how each one of them could be made more collaborative

Linear workstations

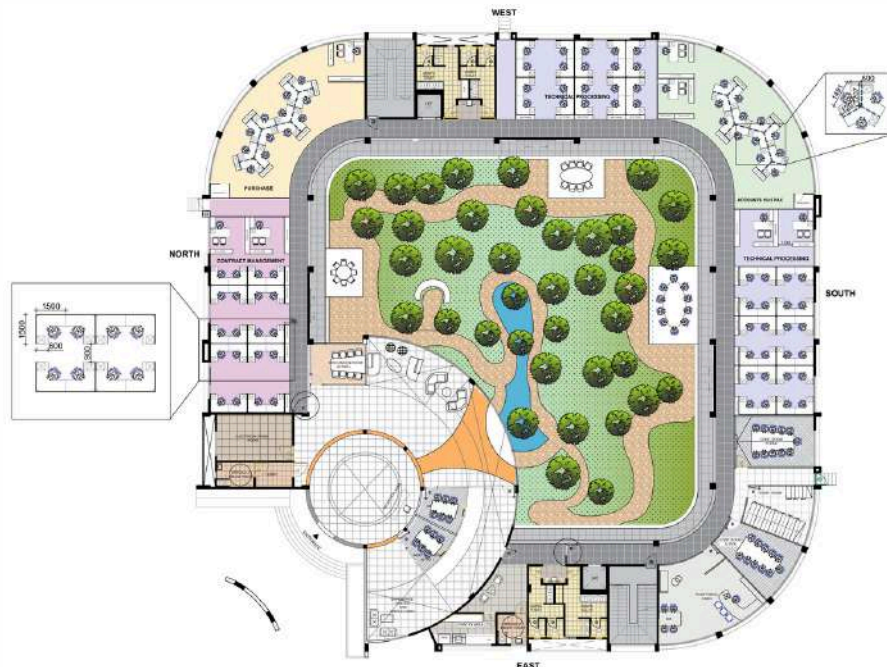
The linear workstations resulted in a great open office space which was a highly collaborative workspace.

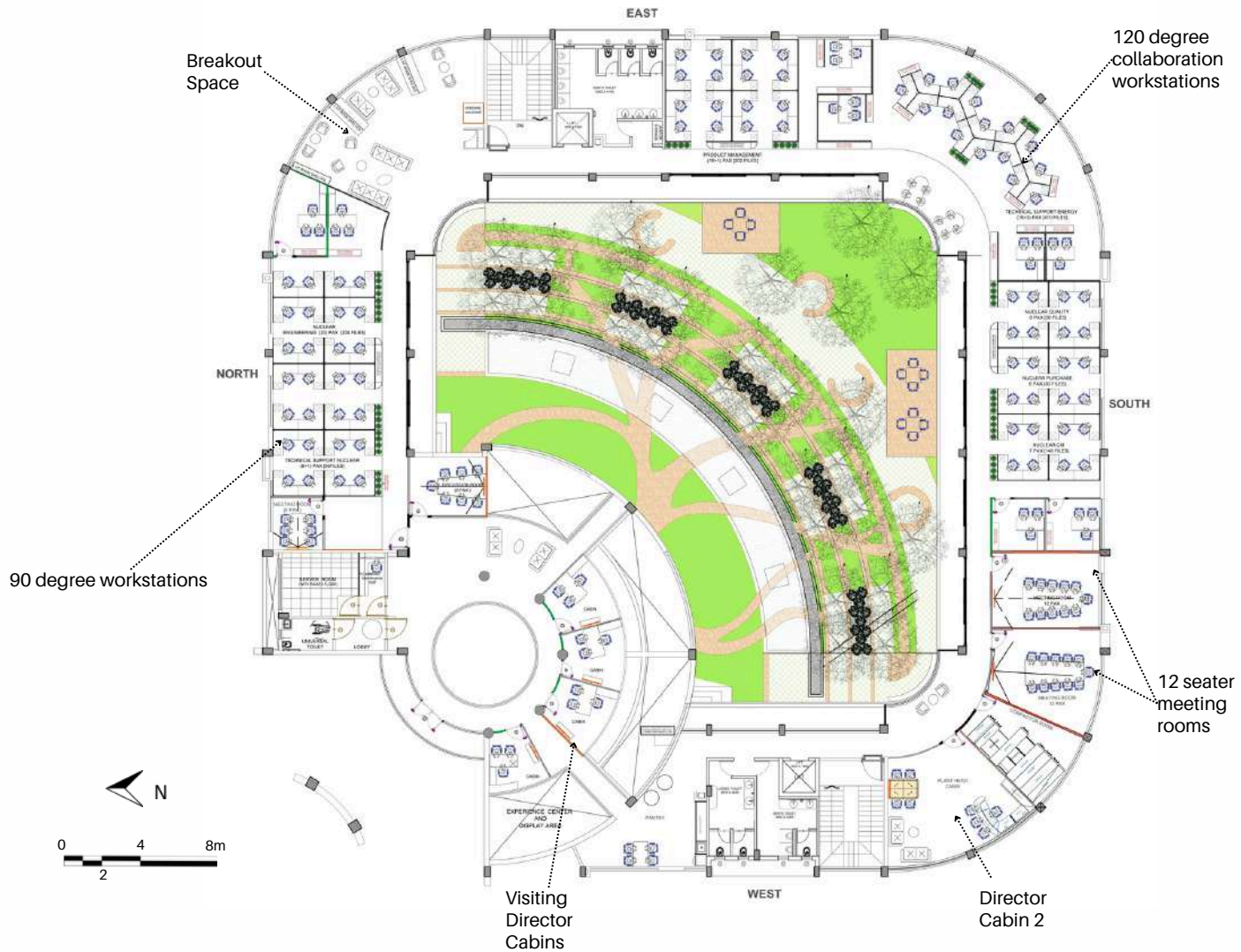


90 degree workstations

Implementing 90-degree workstations created a collaborative workspace, by adding collaboration stations at each cluster's end and increasing the number of cubicles.

This approach seamlessly combines the positive aspects of both cubicle and open-office systems, enhancing overall office dynamics.





FIRST FLOOR PLAN

The first floor plan has all the critical departments of the office having complete access control to these spaces .

GREEN AGENDA

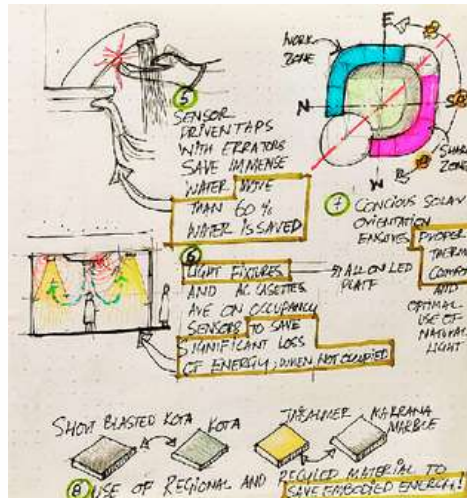
Design strategies at the conceptual level are considered to pave the way for achieving LEED certification.

1. Energy & Atmosphere

- Use of cross ventilation provision from the courtyard has been planned to reduce operating cost.

2. Solar Energy & Light

- South facing solar photovoltaics can harness electricity for emergency lighting + Landscape Lighting + Hot water (provision to mound photovoltaics has been planned).
- South-side mass acts as an insulation with the placement of shaded spaces.
- 85% of the work area gets North-East diffused light.



3. Materials and resources

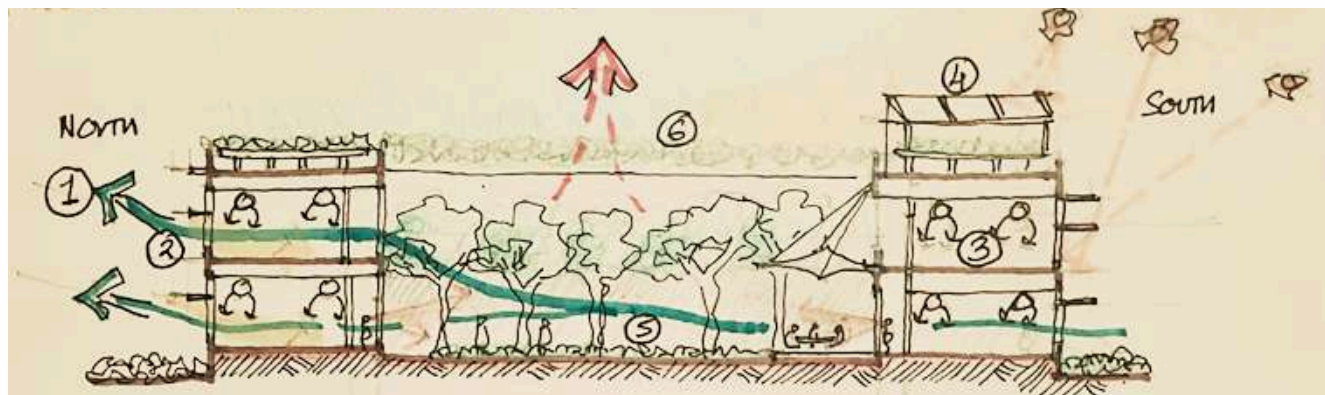
- Our effort was to use all materials that have less embodied energy and that are regional.

4. Water Efficiency

- Using low flow sanitary fixtures to reduce water use.
- A comprehensive rain water harvesting strategy is recommended.

5. Landscape

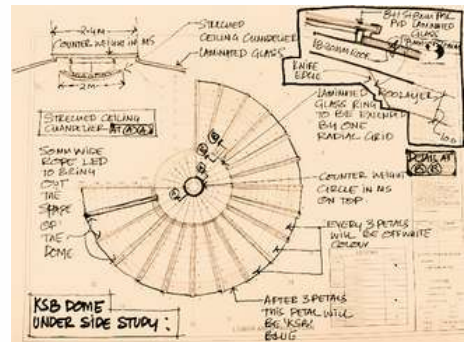
- Native plants using less water
- The central garden works like Lung giving O_2 .
- Roof terrace could have a Hydroponic garden to reduce latent heat by 2-3 degrees.



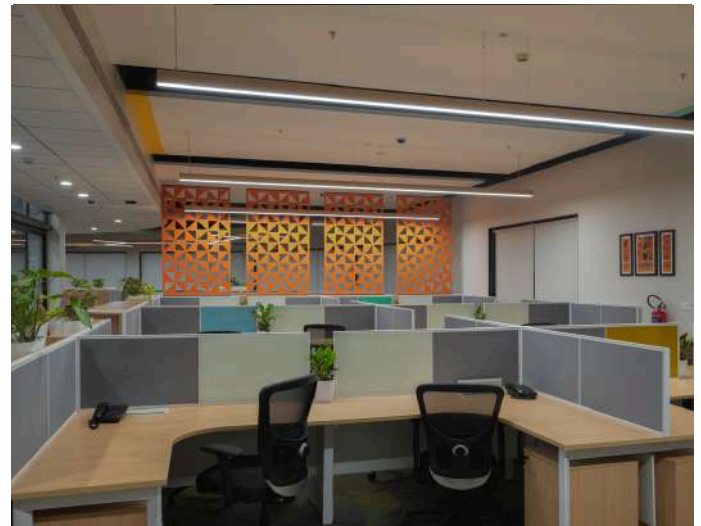
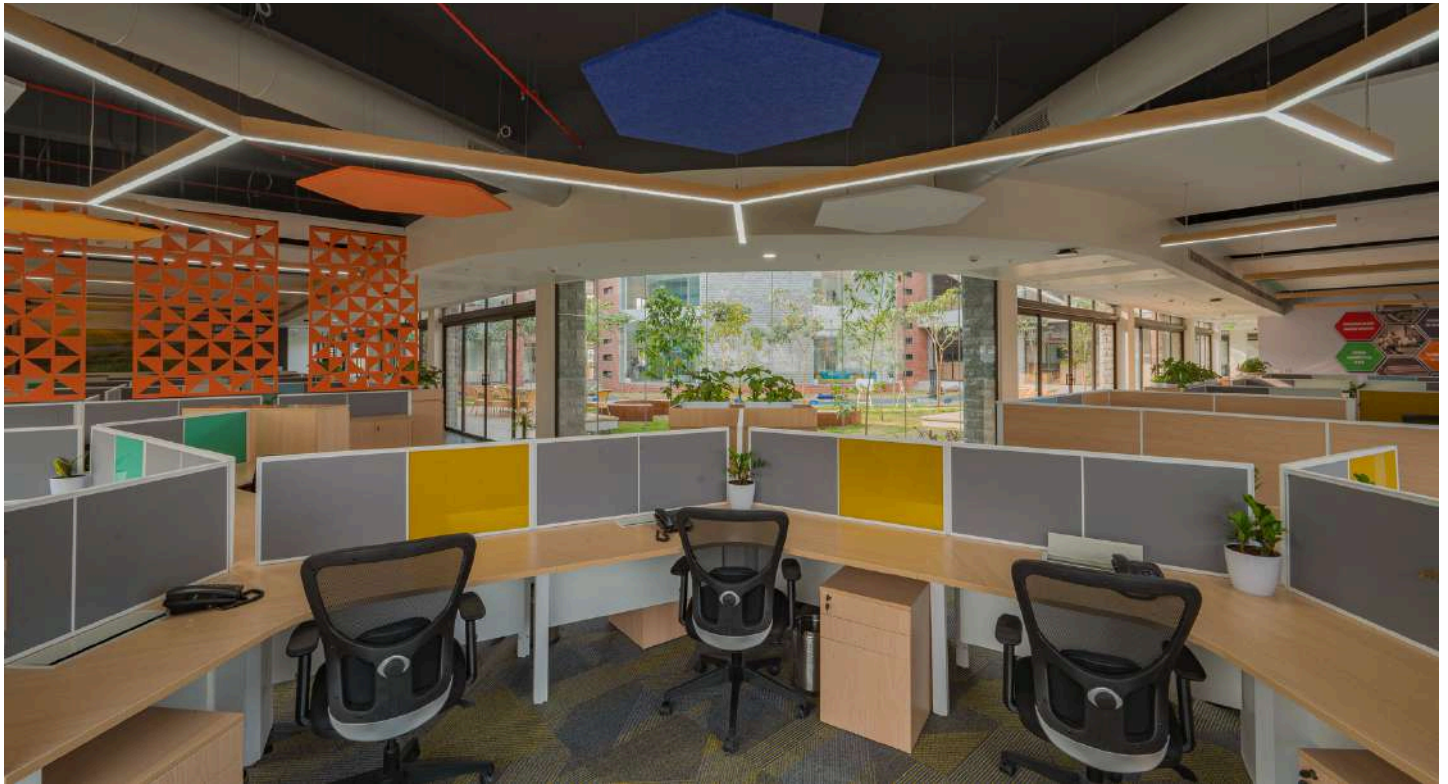




The curved lines of Jaisalmer bands not only add to the aesthetic appeal but also contribute to creating a spacious and welcoming atmosphere. Like open arms....creating a warm and inviting space.



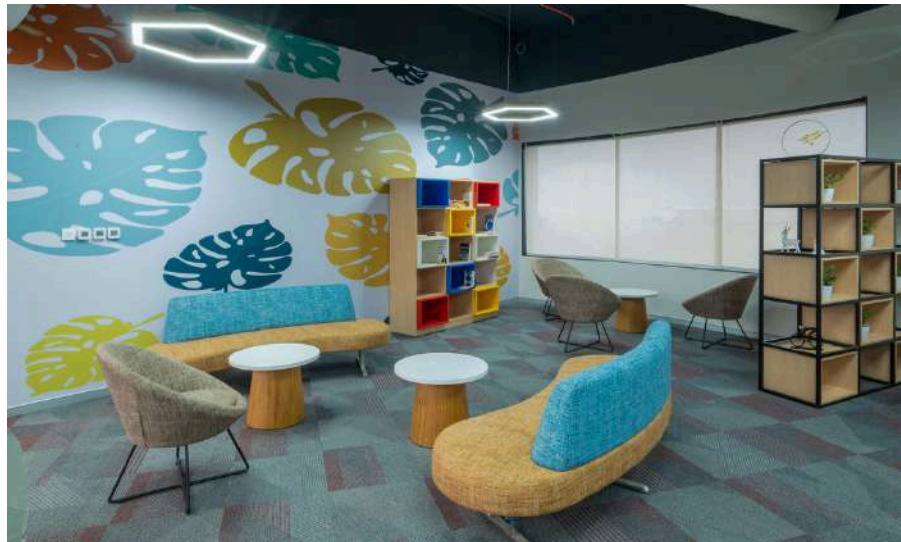
153

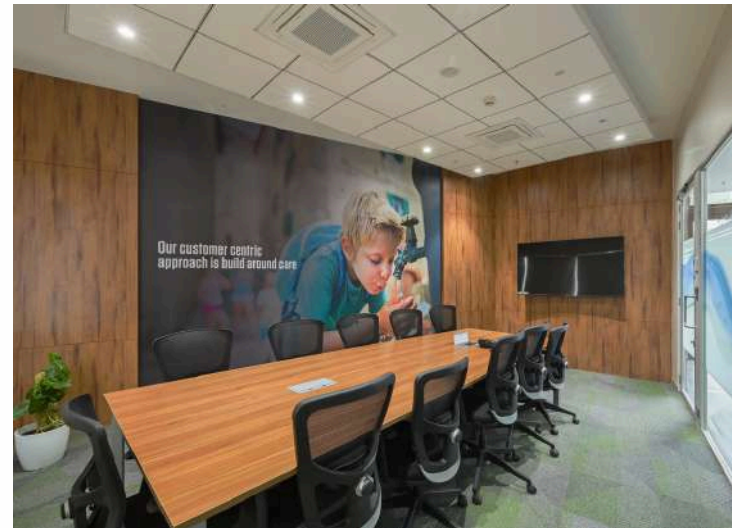


The workspace embraces India's vibrant light and colors, creating a 'G-LOCAL' setting that reflects global and local influences harmoniously.



The interior space fosters a constant visual dialogue between the exterior, creating a seamless connection that enhances the overall spatial experience.





For the leadership spaces, simple clean lines infused with a nostalgic touch have been imagined. This harmonious blend of design elements that evokes a warm and timeless spatial effect.



Ultimately, the design team's earnest effort was directed at crafting a workspace for KSB Pumps that is not only warm and motivating but also agile — a place each employee eagerly anticipates visiting daily, despite its distant location, their goal being, to foster collaboration and co-create an environment of excellence.

